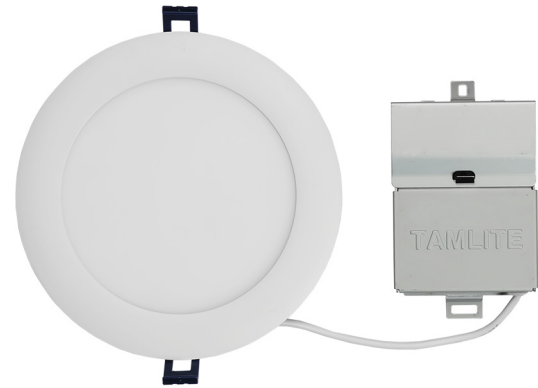


MODEL :		TYPE
PROJECT :		
PREPARED BY :	DATE :	

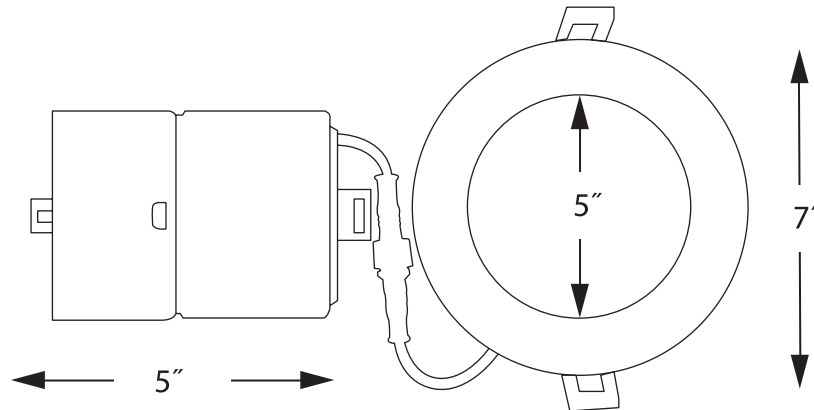
SERIES SPECIFICATIONS

LY6 SERIES

The new slim recessed LED from TamLite Lighting featuring an extra-low profile and detached junction box for easy installation during remodels and new construction projects.



LINE DRAWING



CONSTRUCTION

Housing Material
Aluminum

Lens Material
Polycarbonate

Mounting Style
Spring Clips

Cutout
156mm

ELECTRICAL SPECIFICATIONS (Cont.)

Input Voltage
120VAC

Input Wattage
14W

Power Factor
> 0.95

CRI
> 80

Efficacy
72LM/W

Lumens
1000+Lm

Frequency
60Hz

Color Temp
3000K, 4000K

Dimming
20-100%

MODEL :		TYPE
PROJECT :		
PREPARED BY :	DATE :	

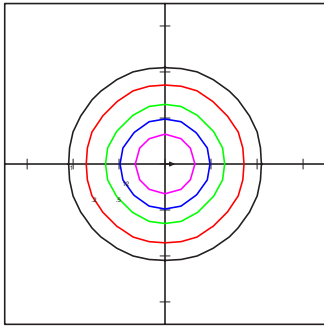
ELECTRICAL SPECIFICATIONS (Cont.)

Min. Starting Temp
-40°C

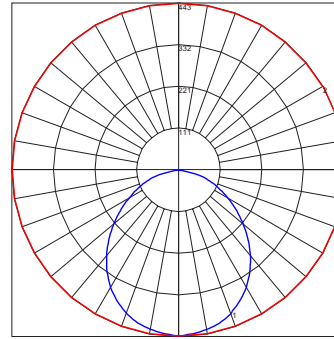
Reported L70 Lifespan 85°C
> 36,000 Hrs.

Max. Temp
40°C

PHOTOMETRIC ISOLINES



TAMLITE LIGHTING DELUCE
 LY61430K/ICWR-SN
 Horizontal Footcandles
 Scale: Hash = 10 Ft.
 Light Loss Factor = 1.00
 Lumens Per Lamp = 1119.9
 Total Lamp Lumens = 1119.9
 Mounting Height = 10 Ft
 Maximum Calculated Value = 4.43 Fc
 Arrangement: Single



Polar Graph
 Maximum Candela = 442.635
 Located at Horizontal Angle = 0
 Vertical Angle = 0
 Vertical Plane Through Horizontal
 Angles
 (0 - 180)
 Horizontal Cone Through Vertical
 Angle
 (0)

CERTIFICATIONS/WARRANTY

Listing
UL Listed

IC Rating
IC Rated

Location Rating:
Suitable for wet locations

IP Rating
IP44 (when installed)

Warranty

Guaranteed three years from the purchase date of the product, against mechanical defects in manufacturing.

ORDERING INFORMATION

Sample Part Number: LY61430K/ICWR-WH

Carton Dimensions: 7.6x7.3x2.7IN

LY	6	14		/IC	
SERIES	SIZE	WATTAGE	COLOR TEMP	RATING	FINISH
LY	[6] : 6"	[14] : 14 Watts	[30] : 3000K	[/IC] : IC Rated	[WR-WH] : White
			[40] : 4000K		[WR-SN] : Satin

MODEL :		TYPE
PROJECT :		
PREPARED BY :	DATE :	

APPROVED DIMMER LIST

Insteon Dimmers				
2477D				
Lutron Dimmers				
CTCL-153P-WH	DV-603P-LA	CT-603PR-WH	DVELV-300P	NTELV-300P
NLV600	300P-SELV	DV-600P		
Leviton Dimmers				
6633-PA	IPL06/LED/INC MODE	6615-P	ISD 600 I 120/IPI06	ISD 400 ELV 120/IPE04
SensorSwitch Dimmers				
nSP5 PCD 2W	nSP5 PCD ELV 120			