

| | | |
|---------------|--------|------|
| MODEL : | | TYPE |
| PROJECT : | | |
| PREPARED BY : | DATE : | |

SERIES SPECIFICATIONS

The TAMHLX high bays are ideal for manufacturing, warehousing, commercial and industrial facility lighting applications. The design makes it a sturdy, user friendly and easy to install high bay.



DIMENSIONS

100W
 Length : 24 1/4" Width : 6 7/8" Height : 2 3/4"

160W
 Length : 46 6/8" Width : 6 7/8" Height : 2 3/4"

CONSTRUCTION

Housing
 Extruded Aluminum

Heat Sink
 Pure aluminum

Surge Protector
 Pre-installed

Mounting
 Cable, Chain, or Surface Mount*

ELECTRICAL SPECIFICATIONS

Input Voltage
 120-277V

Efficacy
 145+ lm/W

CRI
 > 80

Power Factor
 > 0.95

THD
 < 20%

Dimming
 Low Voltage 0-10V

Dimming Levels
 10-100%

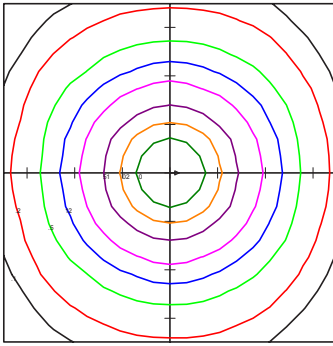
Frequency
 50-60Hz

Lumens
 100W : 14500+
 160W : 24000+

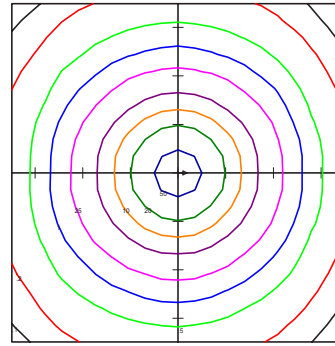
Ambient Operating Temp.
 -30°C ~ 45°C

| | | |
|---------------|--------|------|
| MODEL : | | TYPE |
| PROJECT : | | |
| PREPARED BY : | DATE : | |

PHOTOMETRIC ISOLINES



**TAMLITE LIGHTING HI-LUX
TAMHLX100WL850**
 Horizontal Footcandles
 Scale: 1 Inch = 10 Ft.
 Light Loss Factor = 1.00
 Lumens Per Lamp = N.A.
 Lumens = 13329
 Mounting Height = 10.00 Ft
 Arrangement: Single



**TAMLITE LIGHTING HI-LUX
TAMHLX160WL850**
 Horizontal Footcandles
 Scale: 1 Inch = 10 Ft.
 Light Loss Factor = 1.00
 Lumens Per Lamp = N.A.
 Lumens = 22826
 Mounting Height = 10.00 Ft
 Arrangement: Single

CERTIFICATIONS/WARRANTY

- | | |
|--|---|
| Listing UL Listed Location Rating: Suitable for damp locations Warranty Guaranteed for five years from the purchase date of the product, against mechanical defects in manufacturing. | DLC Listing Fixtures are DLC listed and featured on the Qualified Products List (QPL).** |
|--|---|

ORDERING INFORMATION

Sample Part Number: TAMHLX160W850

Weight 100W: 7 Lbs.

Weight 160W: 14 Lbs.

| | | |
|--------|--------------------|-----------------------|
| TAMHLX | | L850 |
| SERIES | WATTAGE | COLOR TEMP |
| TAMHLX | [100W] : 100 Watt' | [L850] : 80 CRI 5000K |
| | [160W] : 160 Watt | |

ACCESSORIES SOLD SEPARATELY

| | | |
|--------|-----------|----------------------|
| TAMHLX | | |
| SERIES | LENGTH | FINISH |
| TAMHLX | [-2] : 4' | [LC1] : Clear Lens |
| | [-4] : 4' | [LF1] : Frosted Lens |

| | | |
|---------------|--------|------|
| MODEL : | | TYPE |
| PROJECT : | | |
| PREPARED BY : | DATE : | |

NOTES

*Fixture are surface mount capable with provided mounting equipment.

**Not all product variations meet Design Light Consortium Qualifications. Please verify that the product is listed on the DLC products list at www.designlightconsortium.org/QPL.



APPLICATION AND PERFORMANCE SPECIFICATION INFORMATION IS SUBJECT TO CHANGE WITHOUT NOTIFICATION

660 NW PEACOCK BLVD.

PORT ST. LUCIE, FL 34986

TEL: 772.879.0178

TAMLITEUSA.COM