



CONTRACTOR:	
PROJECT:	DATE:
PREPARED BY:	MODEL#:

DESCRIPTION



ARPSLED Series

The ARPSLED area light with its low profile and architectural styling is a great alternative to conventional shoe box luminaires. It is designed to be flexible with interchangeable optics and multiple mounting options.



FEATURES & SPECIFICATIONS

Construction

Die cast aluminum back housing with integral heat sink.

Finish

Powdercoat finish.

Lens

Polycarbonate

Dimmer

Electronic Dimmable Driver.

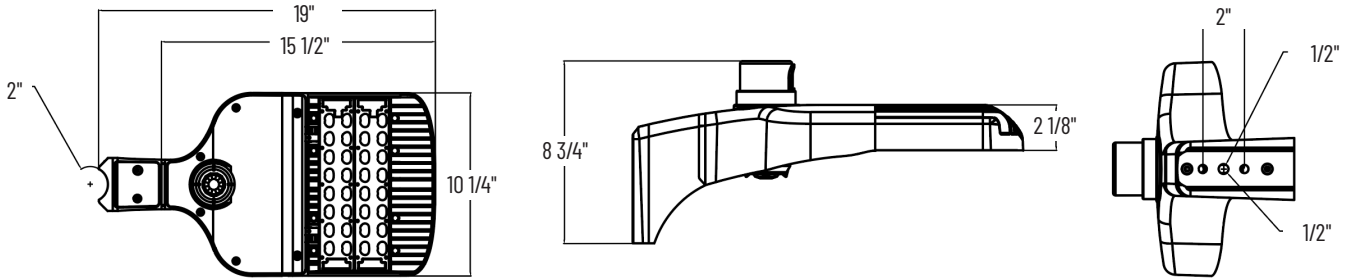
Driver Compartment

Hinged door with gasket.

Photocell Capability

7 pin photocell socket with shorting cap.

LINE DRAWING



ORDERING INFORMATION

EXAMPLE: ARPSLED755KT3-UN4-SP

SERIES	WATTAGE	COLOR TEMP	DISTRIBUTION	VOLTAGE	MOUNTING	OPTIONS
ARPSLED	[75] : 75 Watts	[5K] : 5000K	[T3] : Type III	[-UN4] : 480V	[-SP] : Square Pole Arm	[-HS] : House Side Shield
					[-R3] : 3" Round Pole	
					[-R4] : 4" Round Pole	
					[-R5] : 5" Round Pole	
					[-SF] : 2 3/8" Slipfitter	



CONTRACTOR:	
PROJECT:	DATE:
PREPARED BY:	MODEL#:

ELECTRICAL SPECIFICATIONS

Input Voltage
347-480VAC

Input Current

Drive Current
1.4A

Power Factor
>0.9

Frequency
50-60Hz

Input Power
75W

THD
<20%

Efficacy
123+ LM/W

LED Quantity
(2) 16 chip modules

Lens Type
III

CRI
>70

Dimming
0-10V

Lumens
8980+ Lumens

Color Temp
5000K

Beam Angle
65°

ACCESSORIES

AR-HS
House side shield (4 pieces required)

AL-PS3R
3" round pole adapter

AL-PSSF
2-3/8" slipfitter

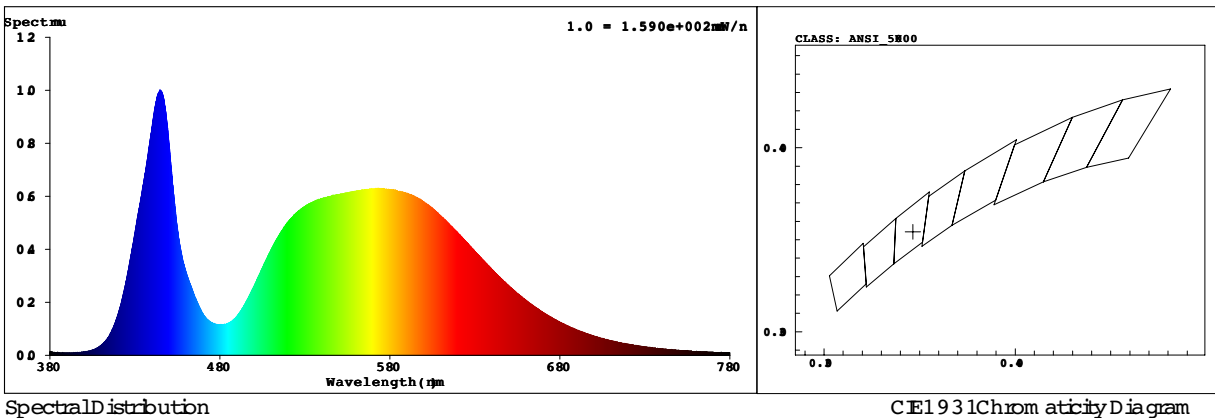
AL-PS4R
4" round pole adapter

AL-PSSQ
Square pole mount arm

AL-PS5R
5" round pole adapter

PERFORMANCE SPECIFICATIONS

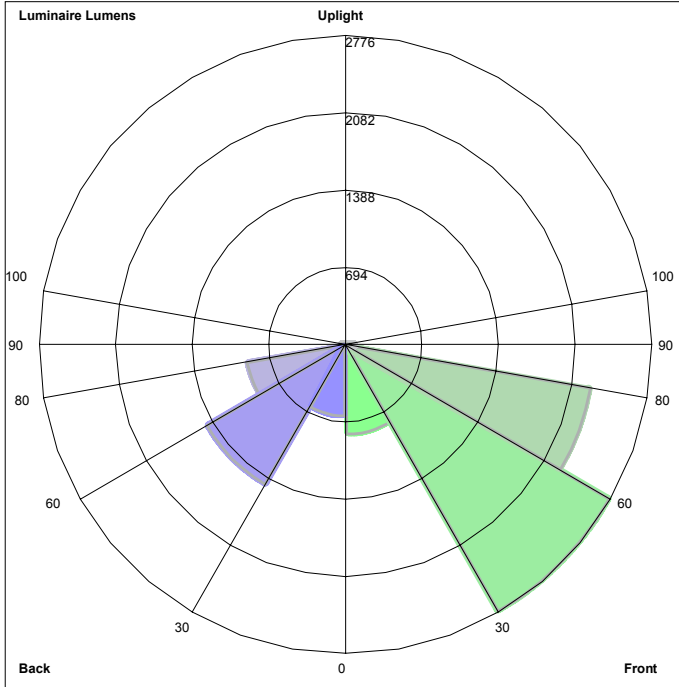
SPECTRAL POWER DISTRIBUTION & CHROMATICITY DIAGRAM





CONTRACTOR:		DATE:
PROJECT:		
PREPARED BY:	MODEL#:	

PERFORMANCE SPECIFICATIONS



**BUG REPORT
TAMLITE LIGHTING HID
ARPSLED755KT3-UN4**

Luminaire Lumens:

Front:

Low=813.7, Medium=2775.9,
High=2261.3, Very High=51.1

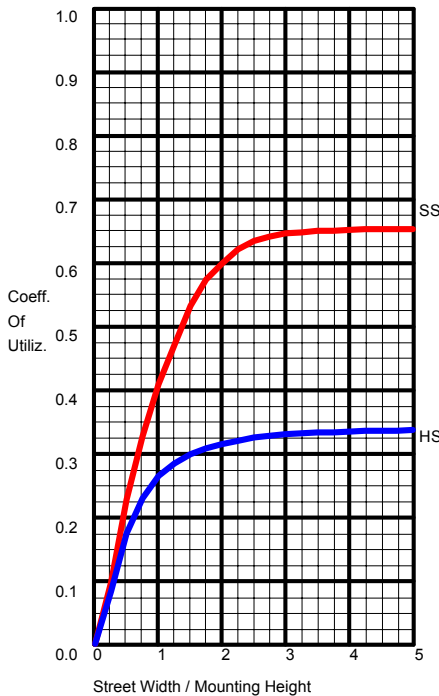
Back:

Low=651.3, Medium=1459.3,
High=991.9, Very High=53.2

Uplight:

Low=0.0, High=0.0

BUG Rating : B2-U0-G2

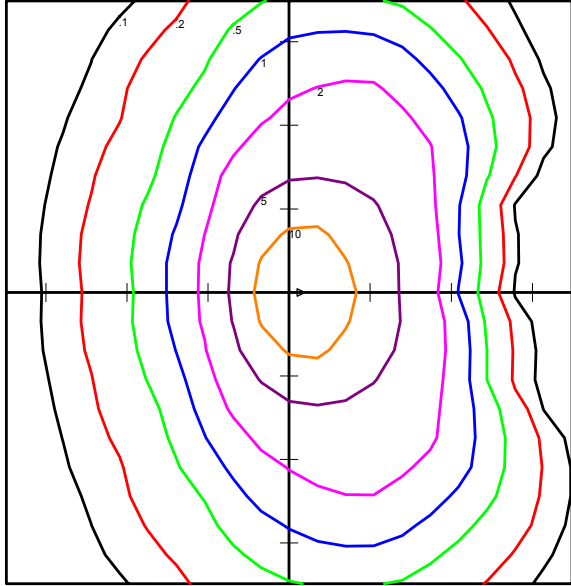


	LUMENS	PERCENT OF LAMP
DOWNWARD STREET SIDE	5902.1	65.7
DOWNWARD HOUSE SIDE	3075.7	34.3
DOWNWARD TOTAL	8977.8	100
UPWARD STREET SIDE	0.00	.0
UPWARD HOUSE SIDE	0.00	.0
UPWARD TOTAL	0.00	.0
TOTAL FLUX	8977.8	100.0

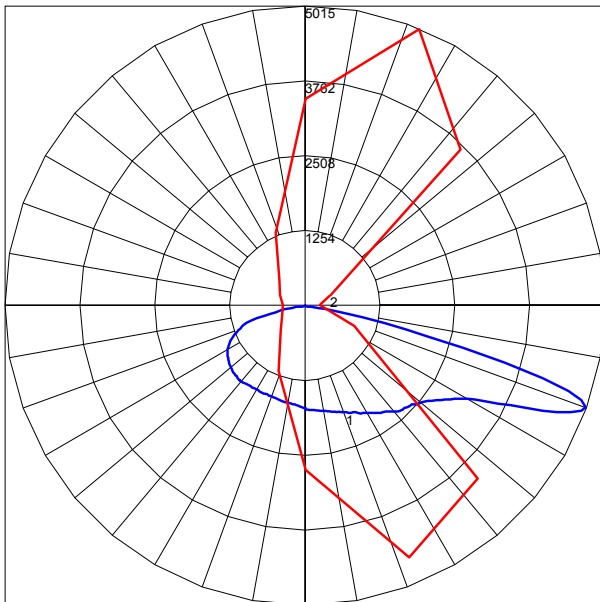


CONTRACTOR:	
PROJECT:	DATE:
PREPARED BY:	MODEL#:

PHOTOMETRIC ISOLINES



TAMLITE LIGHTING HID
 ARPSLED755KT3-UNV4
 Horizontal Footcandles
 Light Loss Factor = 1.00
 Lumens Per Lamp = N.A.
 Lumens = 8978
 Mounting Height = 10.00 Ft
 Maximum Calculated Value = 17.27 Fc
 Arrangement: Single



Polar Graph
 Maximum Candela = 5015.38
 Located at Horizontal Angle = 67.5
 Vertical Angle = 70
 Vertical Plane Through Horizontal
 Angles
 (67.5 - 247.5)
 Horizontal Cone Through Vertical
 Angle
 (70)