



CONTRACTOR:		DATE:
PROJECT:	MODEL#: TAMHLX	
PREPARED BY:		

## DESCRIPTION



## TAMHLX series

The TAMHLX high bays are ideal for manufacturing, warehousing, commercial and industrial facility lighting applications. The design makes it a sturdy, user friendly and easy to install high bay.



## FEATURES AND SPECIFICATIONS

### Intended Use

Applications include large indoor spaces for manufacturing, warehousing, commercial and industrial facility lighting applications with mounting heights ranging from 10' - 40'

### Construction

Steel housing provides high performance and unprecedented quality. Individual, pure aluminum heat sinks offers heat transmission faster than die cast steel.

### Optics

Performance engineered optical lens assembly delivers unique beam angles and frosted lens option reduces glare.

### Electrical

Drivers and internal components are accessible through access plate. Driver disconnect is provided where required to comply with U.S. and Canadian codes. Thermally protected driver standard. Surge protector pre-installed. 70% lumen maintenance at >50,000 hours. Long-life LEDs, coupled with high-efficiency drivers, provide extended service life. The TAMHLX delivers up to 125lm/W.

### Dimming

LED drivers deliver dimming from a 0-10V control signal.

### Installation

The TAMHLX series comes standard with a 10ft Y-toggle suspension cable kit. Fixtures are surface mount capable with surface mount bracket (TAMHLXSRFBKRT Sold Separately).

### Listings

UL listed to US and Canadian safety standards. Damp location listed. For use in ambient operating temperatures ranging from -40°C to 50°C. DesignLights Consortium® (DLC) qualified product. Not all versions of this product may be DLC qualified. Please check the DLC Qualified Products List at [www.designlights.org/QPL](http://www.designlights.org/QPL) to confirm which versions are qualified.

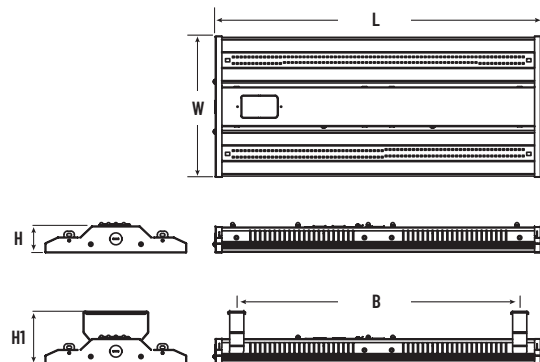
### Warranty

5-year limited warranty.

NOTE: Actual performance may differ as a result of end-user environment and application. All values are design or typical values, measured under laboratory conditions at 25 °C. Specifications subject to change without notice.

## LINE DRAWING

SERIES	L	W	H	H1	B
110W	23.62"	10.24"	2.20"	3.94"	20.47"
165W	23.62"	10.24"	2.36"	4.09"	20.47"
220W	47.24"	10.24"	2.36"	4.09"	41.34"
300W	47.24"	10.24"	2.36"	4.09"	41.34"
500W	47.24"	10.24"	2.36"	4.09"	41.34"





<b>CONTRACTOR:</b>	
<b>PROJECT:</b>	<b>DATE:</b>
<b>PREPARED BY:</b>	<b>MODEL#:</b> TAMHLX

**ORDERING INFORMATION**

SERIES	WATTAGE	CRI	COLOR TEMP	LENS
TAMHLX	[110W] : 110 Watts	[8] : CRI±80	[ 50 ] : 5000K	[C] : Clear Lens
	[165W] : 165 Watts			
	[220W] : 220 Watts			
	[300W] : 300 Watts			
	[500W] : 500 Watts			

**PERFORMANCE SPECIFICATIONS**

Series	Lumens	LPW	Max Wattage
TAMHLX110W	13800	125	110
TAMHLX165W	20000	124	165
TAMHLX220W	27000	124	220
TAMHLX300W	36500	123	300
TAMHLX500W	69000	135	500

GENERAL DRIVER INFORMATION				
Type	Constant Current, Class 2			
ELECTRICAL SPECIFICATIONS	110W/220W	165W	300W	500W
<b>Input</b>				
Input Voltage (VAC)	120V-277V (+/- 10%)			
Frequency Range (Hz)	50-60 Hz (+/- 5%)			
Max. Input Current Max (A) Per Driver	1	0.78	2	2.8
THD @ Full Load	<15%	<20%	<20%	<20%
Efficiency @ Full Load	86%	86%	92%	92%
Inrush Current (Apk, T@50% of Apk) Per Driver	120VAC 70Amp peak	120VAC 45Amp peak	230VAC 60Amp peak	277VAC 130Amp peak
Power Factor @ Full Load	≥0.98	≥0.98	≥0.98	≥0.98
<b>Output</b>				
Output Voltage (VDC)	30-45VDC	28-45VDC	32-54VDC	22-56VDC
Output Current (mA) Per Driver	2050-2250mA	1663 - 1838mA	2000-3600mA	3300-6700mA
Output Ripple Current	< 5% (lpk-pk/2/ mean)	r<5% (lpk-pk/2/ lmean).	≤10%	≤10%
Max. Output power (W) Per Driver	96W	80W	150W	240W
Dimming Control 1-10V	10-100%	10-100%	10-100%	10-100%
Load Regulation	<5%	<5%	±2%	±2%
Line Regulation	<5%	<5%	±1%	±2%
Over Current Protection	YES	YES	YES	YES
Over Load Protection	YES	YES	YES	YES

ENVIRONMENTAL SPECIFICATIONS	110W/ 220W 165W/300W/500W
Ambient Range	-20°C to 55°C
MTBF	> 300,000hrs calculated @ 25°C
Max. Relative Humidity	5-95% non-condensing
EMC Compliance	FCC Part 15 Class A
Sound Rating	Class A

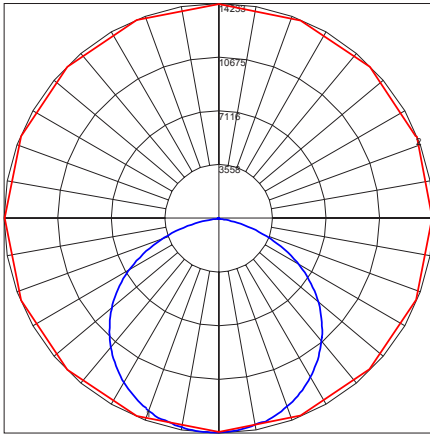


CONTRACTOR:		DATE:
PROJECT:		
PREPARED BY:	MODEL#: TAMHLX	

**PHOTOMETRIC REPORTS**

**POLAR GRAPH**

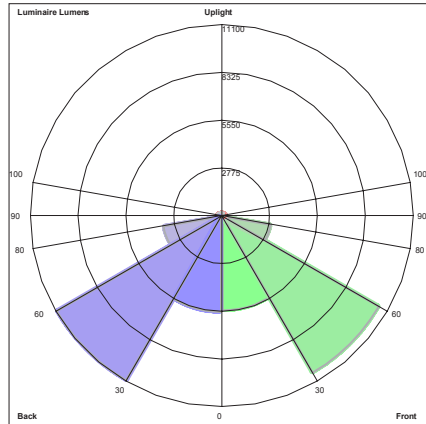
IES ROAD REPORT  
PHOTOMETRIC FILENAME : TAMHLX300W850.IES  
POLAR GRAPH



Maximum Candela = 14232.75 Located At Horizontal Angle = 202.5, Vertical Angle = 2  
# 1 - Vertical Plane Through Horizontal Angles (202.5 - 22.5) (Through Max. Cd.)  
# 2 - Horizontal Cone Through Vertical Angle (2) (Through Max. Cd.)

**LUMINAIRE CLASSIFICATION GRAPH**

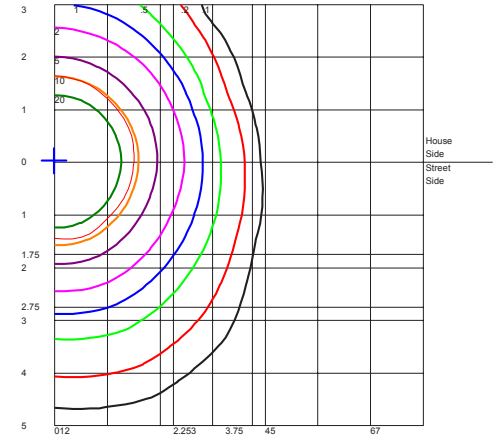
IES ROAD REPORT  
PHOTOMETRIC FILENAME : TAMHLX300W850.IES  
LUMINAIRE CLASSIFICATION SYSTEM (LCS) GRAPH



Luminaire Lumens:  
Front: Low=5551.9, Medium=10577.7, High= 20355.0, Very High=76.3  
Back: Low=5643.5, Medium=11099.8, High= 34720.0, Very High=125.5  
Uplight: Low=28.6, High=126.3  
BUG Rating : B5-U3-G2

**ISOCANDELA PLOT**

IES ROAD REPORT  
PHOTOMETRIC FILENAME : TAMHLX300W850.IES  
ISOFOOTCANDELA LINES OF HORIZONTAL ILLUMINANCE



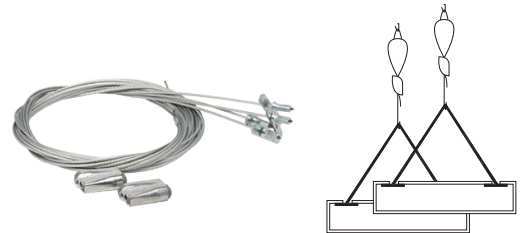
Distance In Units Of Mounting Height  
Values Based On 10 Foot Mounting Height  
1/2 Maximum Candela Trace Shown As Dashed Curve  
(\*) = Maximum Candela Point

**ACCESSORIES**

**MECHANICAL/OPTICAL:**

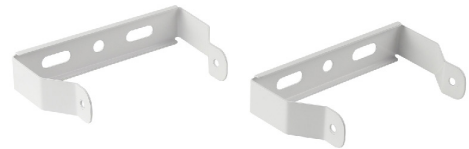
**GRIPPLE AIRCRAFT CABLE HANGERS (2 PACK)**

Single point suspension that allows two point to be suspended using one Gripple fastener. Two legs improve center of gravity and increases stability. Ideal for services that require maintenance. Y-Fit Toggle accessory end fixings, in Gripple size No. 2 with 5:1 Safety Factor is designed for use with a standard Gripple Hanger kit, for longer drops and increased adjustment. **INCLUDED.**



**SURFACE MOUNT KIT**

Surface mount brackets allow fixture to be mounted directly to ceiling or wall. **SOLD SEPARATELY.**



TAMHLXSMK-KIT  
0546-8418