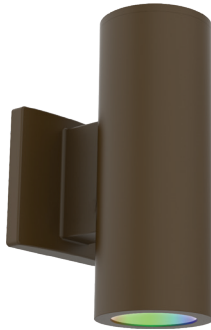




CONTRACTOR:	
PROJECT:	DATE:
PREPARED BY:	MODEL#:

**SERIES AND SPECIFICATIONS**



**SHN RGBW Series**

The SHN Wall Cylinder is a stylish architectural wall mount luminaire. It is ideal for accent lighting on building facades along walkways or near building entrances. Some typical installations include hotels, theaters and restaurants.



**FEATURES & SPECIFICATIONS**

**Intended Use**

Suitable for use in outdoor space.

**Construction**

ADC12 Aluminum heat sink, outdoor powder coating

**Dimming**

0-10 Volt dimming

**Lens**

High light transmittance PC + Glass

**Operating Temperature**

-40 - 40°C

**Listings**

UL listed to US and Canadian safety standards. Wet location listed.

**Warranty**

Guaranteed for five years from the purchase date of the product, against mechanical defects in manufacturing.

**Bluetooth**

Bluetooth control with Tuya app. Bluetooth wireless connection, Phone APP controls colors, Multi color changing, dimmable. 4 main colors Red, Green, Blue, White and 16 different colors of lights available.



**NOTE:** Actual performance may differ as a result of end-user environment and application. All values are design or typical values, measured under laboratory conditions at 25 °C. Specifications subject to change without notice.

**PERFORMANCE SPECIFICATIONS**

**Input**

120-277V

**Power Factor**

>0.9

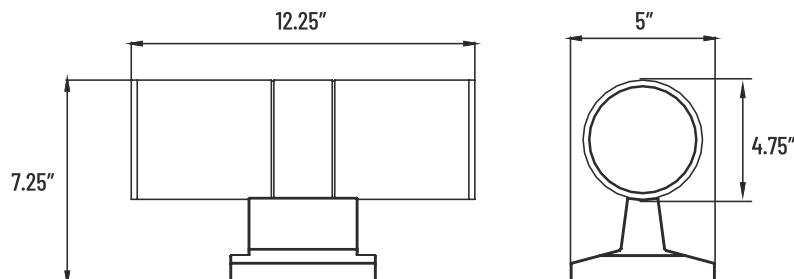
**Frequency**

50/60Hz

**THD**

<20%

**LINE DRAWING**



APPLICATION AND PERFORMANCE SPECIFICATION IS SUBJECT TO CHANGE WITHOUT NOTIFICATION



CONTRACTOR:	
PROJECT:	DATE:
PREPARED BY:	MODEL#:

**ORDERING INFORMATION**

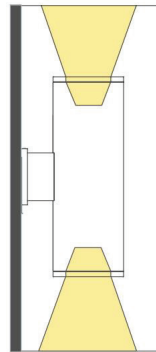
EXAMPLE: SHN2 RGBW BZ 60

SERIES	CONFIGURATION	WATTAGE	FINISH	PRIMARY REFLECTOR	SECONDARY REFLECTOR
SHN	[ 2 ] : Double Ended	[ RGBW ] : 20W RGB Color Selectable	[ BZ ] : Bronze	[ 60 ] : 60 Degree	[ 60 ] : 60 Degree

**LIGHTING SPECIFICATIONS**

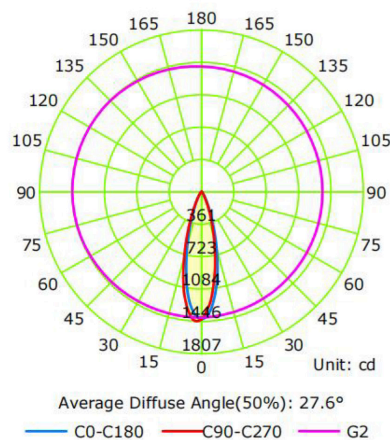
SERIES	LUMENS	LPW	WATTAGE	VOLTAGE	CRI
SHN2 RGBW BZ 60	950lm (Max 5K white light) 440lm (Max mixed light)	47.5	20W	120-277VAC	>70

**LIGHT SCHEMATIC DIAGRAM**



Double-sided

**PHOTOMETRICS**



APPLICATION AND PERFORMANCE SPECIFICATION IS SUBJECT TO CHANGE WITHOUT NOTIFICATION