



CONTRACTOR:	
PROJECT:	DATE:
PREPARED BY:	MODEL#:

**DESCRIPTION**



**NOVA Series**

The NOVA series wall pack offers a modern architectural appearance combined with optimal light distribution where needed. The cutoff wall pack design is ideal for mounting on commercial buildings adjacent to parking lots and roadways where glare from traditional wall packs could be a safety hazard to drivers. A durable powder coated aluminum housing ensures the NOVA series will withstand the most demanding conditions while reducing glare and light pollution to a minimum, keeping your facility dark sky compliant.



**CONSTRUCTION**

**Housing**

Die cast aluminum

**Finish**

Bronze powder coat

**Dimming**

0-10V

**Optics**

High transmission polycarbonate

**Mounting**

Surface mount

**Operating Temperatures**

-40°C~+40°C

**Photocell**

Integrated photocell with ON/OFF switch

**Listings**

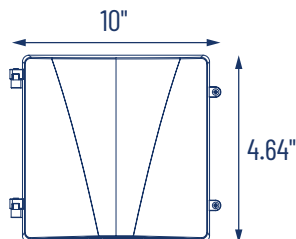
UL listed to US safety standards. Wet location listed. DesignLights Consortium® (DLC) qualified product. Not all versions of this product may be DLC qualified. Please check the DLC Qualified Products List at [www.designlights.org/QPL](http://www.designlights.org/QPL) to confirm which versions are qualified.

**Warranty**

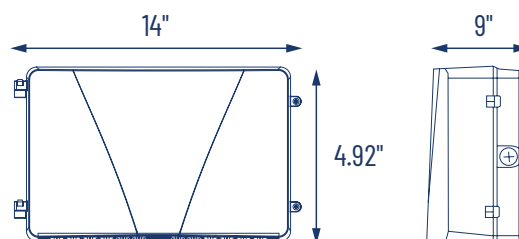
5-year limited warranty.  
NOTE: Actual performance may differ as a result of end-user environment and application. All values are design or typical values, measured under laboratory conditions at 25 °C. Specifications subject to change without notice.

**LINE DRAWINGS**

NOVA 1WSCS BZ



NOVA 2WSCS BZ  
NOVA 3WSCS BZ



APPLICATION AND PERFORMANCE SPECIFICATION IS SUBJECT TO CHANGE WITHOUT NOTIFICATION



CONTRACTOR:	
PROJECT:	DATE:
PREPARED BY:	MODEL#:

### ORDERING INFORMATION

Example: NOVA 1WSCS BZ

SERIES	WATTAGE	COLOR TEMP.	FINISH
NOVA	[ 1WS ] : 15/20/25W [ 2WS ] : 33/44/55W [ 3WS ] : 60/80/100W	[ CS ] : Selectable 3000K/4000K/5000K	[ BZ ] : BRONZE

### LIGHTING SPECIFICATIONS

SERIES	LUMENS	LPW	WATTAGE	VOLTAGE	CRI
NOVA 1WSCS BZ	3250lm@4000K 3125lm@3000K,5000K	135lm/W@4000K 125lm/W@3000K,5000K	15/20/25W	120-347VAC	≥70
NOVA 2WSCS BZ	7150lm@4000K 6875lm@3000K,5000K	135lm/W@4000K 125lm/W@3000K,5000K	33/44/55W	120-347VAC	≥70
NOVA 3WSCS BZ	13000lm@4000K 11000lm@3000K,5000K	130lm/W@4000K 110lm/W@3000K,5000K	60/80/100W	120-347VAC	≥70

### ELECTRICAL SPECIFICATIONS

SERIES	NOVA 1WSCS BZ	NOVA 2WSCS BZ	NOVA 3WSCS BZ
Input Voltage (VAC)	120-347VAC	120-347VAC	120-347VAC
Frequency Range (Hz)	50/60Hz	50/60Hz	50/60Hz
Power Factor @ Full Load	>0.9	>0.9	>0.9
Dimming Control 1-10V	0-10V	0-10V	0-10V
Over Voltage Protection	YES	YES	YES
Over Load Protection	YES	YES	YES
Over Temperature protection	YES	YES	YES
Output Short-Circuit Protection	YES	YES	YES

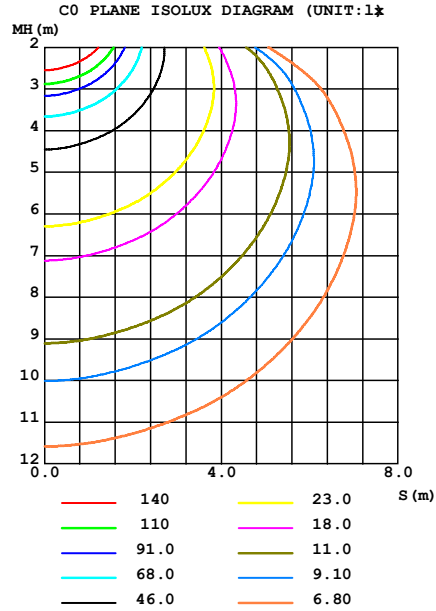
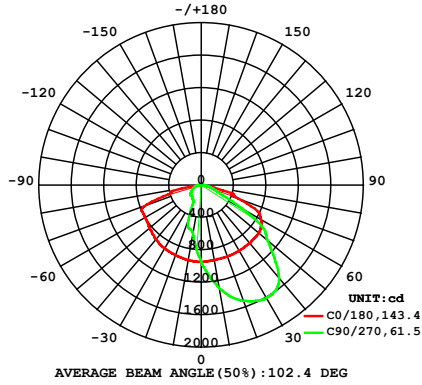
APPLICATION AND PERFORMANCE SPECIFICATION IS SUBJECT TO CHANGE WITHOUT NOTIFICATION



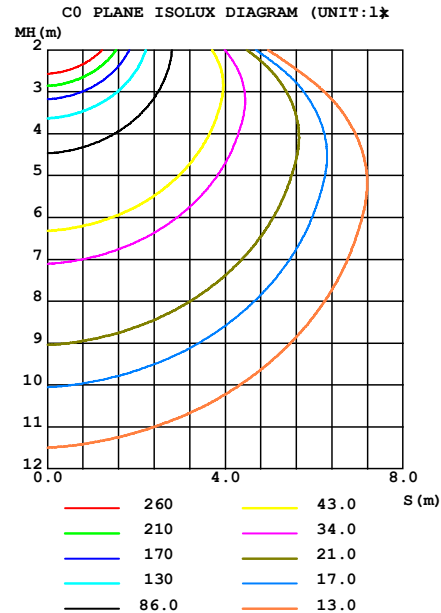
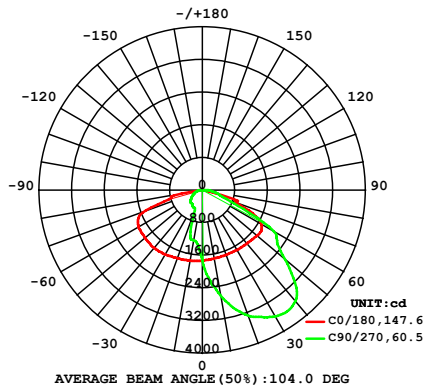
CONTRACTOR:	
PROJECT:	DATE:
PREPARED BY:	MODEL#:

**PHOTOMETRICS**

( 25W )



( 55W )



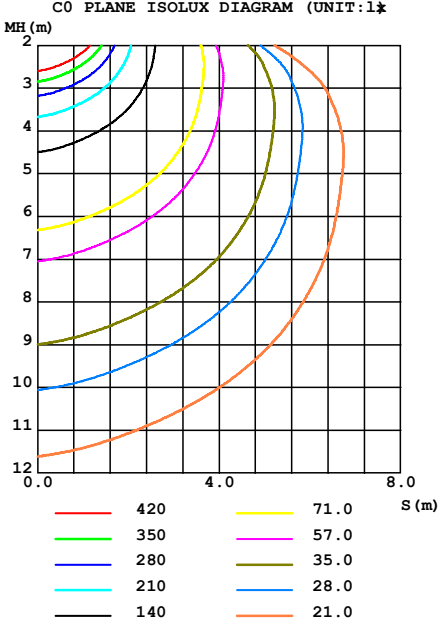
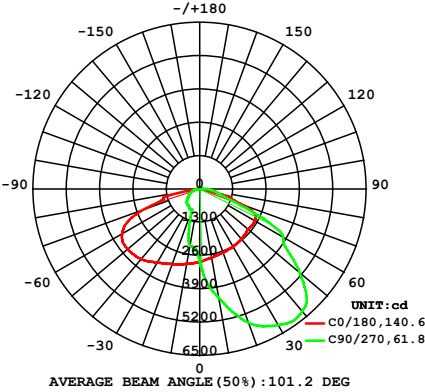
APPLICATION AND PERFORMANCE SPECIFICATION IS SUBJECT TO CHANGE WITHOUT NOTIFICATION



CONTRACTOR:	
PROJECT:	DATE:
PREPARED BY:	MODEL#:

PHOTOMETRICS

( 100W )



ADJUSTMENT INFORMATION

Color selectable switch is accessed inside the fixture housing. 3000K,4000K,5000K CCT.

Wattage selectable switch is also accessed inside the fixture housing. Wattage can be switched between H(High), M(Medium) and L(Low). Max wattage setting is default. NOVA 1WSCS 13/19/25. NOVA 2WSCS 28/41/55W. NOVA 3WSCS 60/80/100W.

Photocell Control

Plug in photocell if desired or unplug photocell if not needed. Connection located inside fixture housing. Follow installation instructions to access connector.

