

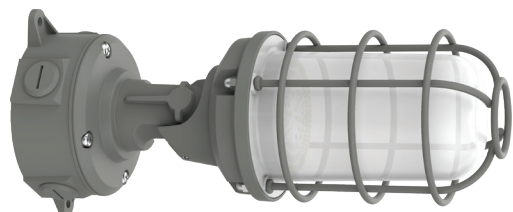


CONTRACTOR:	
PROJECT:	DATE:
PREPARED BY:	MODEL#:

## SERIES SPECIFICATIONS

### VPLWSCS SERIES

Indoor and outdoor applications including entry ways, covered walkways, retail, warehouses, stockrooms, utility areas



## CONSTRUCTION

**Housing Material:** Rugged die-cast aluminum housing  
**Color:** Gray powder-coat finish

**Range of Adjustment:** 90-180°

**Lens Material:** Polycarbonate

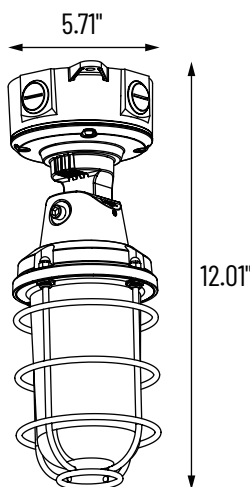
## ELECTRICAL SPECIFICATIONS

**Input Voltage:** 120-277V AC  
**Lumens:** 3300lm  
**Frequency:** 50-60Hz

**Color Temp.:** 3000K/4000K/5000K  
**Wattage:** 15/20/30W

**Operating Temp.:** -40°C to 45°C  
**CRI:** 80

## LINE DRAWINGS





CONTRACTOR:	
PROJECT:	DATE:
PREPARED BY:	MODEL#:

**ORDERING INFORMATION**

Example: VPLWSCS

SERIES	WATTAGE	COLOR
VPL	[ WS ] : 15/20/30W	[ CS ] : 3K/4K/5K

**LIGHTING SPECIFICATIONS**

SERIES	LUMENS	LPW	WATTAGE	VOLTAGE	CRI
VPLWSCS	3300	110	30	100-277v	>80

APPLICATION AND PERFORMANCE SPECIFICATION IS SUBJECT TO CHANGE WITHOUT NOTIFICATION