



# TAMLITE LIGHTING

660 NW Peacock Blvd. Port St. Lucie, FL 34986  
tel: (772) 878-4944 or on the web at [www.tamliteusa.com](http://www.tamliteusa.com)

## SPECIFICATION & FEATURES

Catalog #:	08/21/2015
Project:	Type:
Prepared By:	

### DESCRIPTION

The WL wraparound's clean and shallow fixture design makes it ideal for general illumination of areas such as hallways/corridors, commercial, education and office buildings.

### HOUSING

- Hot-dipped galvanized steel housing
- Painted After Fabrication (PAF)- safe handling and added corrosion resistance

### LENS

- Extruded low brightness prismatic acrylic lens

### ELECTRICAL DETAILS

- NEC required ballast disconnect pre-installed

### LISTINGS/RATINGS/COMPLIANCE

Fixtures are UL listed and suitable for damp locations.

### WARRANTY

Guaranteed one year from the purchase date of the product, against mechanical defects in manufacturing.

### NOTES

Product performance may vary depending on model and end user environment.

\*\*\* SPECIFICATIONS SUBJECT TO CHANGE WITHOUT NOTICE\*\*\*

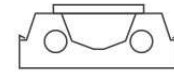
# WL Series

## Fluorescent Wraparound

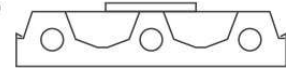


### SPECIFICATIONS / DIMENSIONS

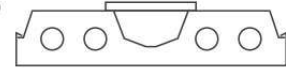
2 LAMP



3 LAMP



4 LAMP



#### DIMENSIONS

	L	W	H
2' 2 Lamp	24 1/4 "	7 3/4 "	3 1/8 "
4' 2 Lamp	48 1/4 "	7 3/4 "	3 1/8 "
4' 3 Lamp	48 1/4 "	15 7/8 "	3 3/8 "
4' 4 Lamp	48 1/4 "	12 15/16 "	3 1/8 "

### ORDERING INFORMATION

Sample Part Code: WL2217DPS

WL				D	
SERIES	LAMP QTY	LENGTH	LAMP WATTAGE	VOLTAGE	BALLAST OPTION
WL	[2] : 2 Lamp [3] : 3 Lamp [4] : 4 Lamp	[2]: 2ft [4]: 4ft	[14] : 14W T5(2ft ) [17] : 17W T8(2ft ) [28] : 28W T8 [28T5] : 28W T5 [32] : 32W T8 [54] : 54W T5HO	[D] : 120-277V	[BLANK] : No Options [K] : 120-277V (2 ballast)* [PS] : 120-277V Program Rapid Start [RES] : 120V Residential [DIM] : 120-277V 0-10V Series Elec. Dimming [LPF] : 0.77 Low Ballast Factor 120-277V [M1] : 1.00 Medium Ballast Factor 120-277V [HPF] : 1.18 High Ballast Factor 120-277V [B1] : Emerg. 500 Lum. 1 Lamp [B2] : Emerg. 1400 Lum. 1 Lamp* [B3] : Emerg. 1400 Lum. 2 Lamp* *Consult factory for 2ft fixture