



CONTRACTOR:	
PROJECT:	DATE:
PREPARED BY:	MODEL#:

DESCRIPTION



CSRT Series

A truly customizable solution for our contractors, CSRT series 24V ribbon tape offers greater job-site design freedom compared to traditional kits. With bulk reels in two different lumen packages, architectural channels, dimmable drivers, and screw-in terminal connectors branches can stock and supply customers in house and on site with the exact custom runs they need.



GENERAL SPECIFICATIONS/WARRANTY

Input Voltage: 24VDC

CRI: 95

LED Lifespan: ~30000 Hrs at 25°C

Dimmable: 0-100%*

*May vary based on driver
(Driver not included)

Driver Type: Magnetic or Electronic
(Not Included)

Operating Temp: -20°C ~ +40°C

IP Rating: IP20

Listings: UL listed to US safety standards.
Suitable for dry locations.

Warranty: 1-year limited warranty.

NOTE: Actual performance may differ as a result of end-user environment and application. All values are design or typical values, measured under laboratory conditions at 25 °C. Specifications subject to change without notice.

ADHESIVE SPECIFICATIONS

Tensile Strength

688 kg/m³ (43 lb/ft³)

Min. 608 kg/m³ (38 lb/ft³)

Max. 768 kg/m³ (48 lb/ft³)

Temp. Resistance Min/Hours

72 hrs. at 22°C (72°F)

(Break-away and Continuing Peel)

Adhesion Strength to Backing

688 kg/m³ (43 lb/ft³)

Min. 608 kg/m³ (38 lb/ft³)

Max. 768 kg/m³ (48 lb/ft³)

Temp. Resistance Days/Weeks

Exceeds 100 hours at 70°C (158°F)

(Static Shear)

Adhesion Strength to Polypropylene

Breakaway and Continuing Peel tests are run with 12.7 mm (0.5 in.) wide tape on PVC test bars



CONTRACTOR:	
PROJECT:	DATE:
PREPARED BY:	MODEL#:

PERFORMANCE SPECIFICATIONS

Color Temperature	Warm White	Warm White 3K	Neutral White	Cool White	High Lumen Warm White	High Lumen Warm White 3K	High Lumen Neutral White	High Lumen Cool White
CCT	2700K	3000K	4000K	5000K	2700K	3000K	4000K	5000K
W/ft	1.83	1.83	1.83	1.83	3.66	3.66	3.66	3.66
lm/ft	140	150	160	170	330	340	350	360
Cut Length	4"	4"	4"	4"	2"	2"	2"	2"
Max Run Length*	50'	50'	50'	50'	35'	35'	35'	35'

*Maximum runs based on voltage drop, please see FAQ for more details.

ORDERING INFORMATION

EXAMPLE: CSRT100RW-WW3K

SERIES	LENGTH	TAPE COLOR	COLOR TEMPERATURE	OPTIONS
CSRT	[100R] : 100 Ft. Reel	[W] : White Ribbon [B] : Black Ribbon	[-WW] : 2700K Warm White [-WW3K] : 3000K Warm White* [-NW] : 4000K Neutral White [-CW] : 5000K Cool White	[Blank] : Standard Lumen [HL] : High Lumen

*Warm White 3K only available with Tape Color White Ribbon.



CONTRACTOR:	
PROJECT:	DATE:
PREPARED BY:	MODEL#:

ACCESSORIES (SOLD SEPARATELY)



CSRT2IC
0327-6837
2' Connector Cable



CSRT6IC
0327-6840
6' Connector Cable



CSRT12IC
0327-6843
12' Connector Cable



CSRT24IC
0327-6846
24' Connector Cable



CSRT4FTIC
0327-6849
4' Connector Cable



CSRT8FTIC
0327-6852
8' Connector Cable



CSRTBIC
0327-6855
Butt End Connector



TLVC60W-24
0580-2003
24V 60W Dimmer/Driver All-in-One



CSRT30 JB
0633-3924
30w 24v JB Dimmable
Driver 5in1 120-277v



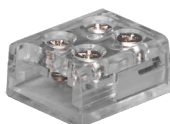
CSRT60 JB
0633-3927
60w 24v JB Dimmable
Driver 5in1 120-277v



CSRT96 JB
0633-3930
96w 24v JB Dimmable
Driver 5in1 120-277v



CSRT200 JB
0633-3933
200w 24v JB Dimmable
Driver 5in1 120-277v



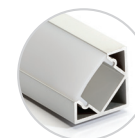
TLTB-TT-1
0635-9274
Tape to Tape Splice Connector



TLTB-TW-1
0636-2247
Tape to Wire Splice Connector



CSRTAL4RD
0369-3426
4' Aluminum Channel With A Large
Milky Lens To Maximize Light
Diffusion When Mounted.



CSRTAL4CR
0369-3423
4' Aluminum Channel With A
45° Angled Milky Lens For Light
Diffusion In Corners.



CSRTAL4SL
0369-3429
4' Aluminum Channel With Slim
Milky Lens For Light Diffusion Of A
Flat Surface.



TALRT4MC
0295-1871
4' Plastic Mounting Channel
Without A Lens For Mounting On
Flat Surfaces.

APPLICATION AND PERFORMANCE SPECIFICATION IS SUBJECT TO CHANGE WITHOUT NOTIFICATION