



CONTRACTOR:	
PROJECT:	DATE:
PREPARED BY:	MODEL#:

SERIES SPECIFICATIONS



WPALED Series

The WPALED is a dual purpose LED luminaire that can be installed as a flood light or a wallpack.



FEATURES & SPECIFICATIONS

Housing

Die cast aluminum housing with integral heat sink

Finish

Bronze powder coat

Adjustment

Front housing can be tilted upward via a stainless steel hinge system with spring loaded detents to allow for multi-position adjustment and flexible light distribution.

Lens

Polycarbonate optic plate with gasket

Driver Compartment

Housing has a two piece hinged junction box with 1/2" coin plugs for side, top, and rear entry.

Listings

UL listed to US safety specifications. Wet location rated. DesignLights Consortium® (DLC) qualified product. Not all versions of this product may be DLC qualified. Please check the DLC qualified products list at www.designlights.org/QPL to confirm which versions are qualified.

Warranty

5-year limited warranty.

NOTE: Actual performance may differ as a result of end-user environment and application. All values are design or typical values, measured under laboratory conditions at 25 °C. Specifications subject to change without notice.

ELECTRICAL SPECIFICATIONS

Input Voltage
120-277VAC

Frequency
60Hz

Lumens
6600 Lumens

Input Current
0.42a Max

Power Factor
>.9

Color Temp
5000K

Input Power
49.67

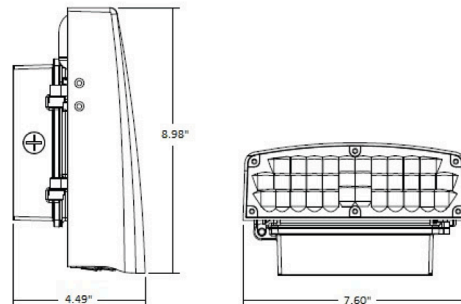
Efficacy
132lm/W

Beam Angle
91.5°

THD
<20

CRI
83.5

LINE DRAWING



APPLICATION AND PERFORMANCE SPECIFICATION IS SUBJECT TO CHANGE WITHOUT NOTIFICATION



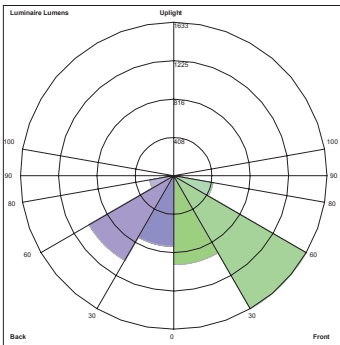
CONTRACTOR:	
PROJECT:	DATE:
PREPARED BY:	MODEL#:

ORDERING INFORMATION

EXAMPLE: WPALED505K

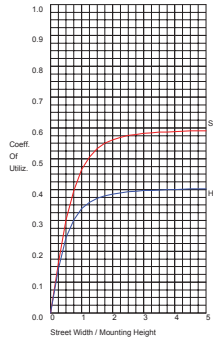
SERIES	WATTAGE	COLOR TEMP.
WPALED	[50] : 50 Watts	[5K] : 5000K

PHOTOMETRICS

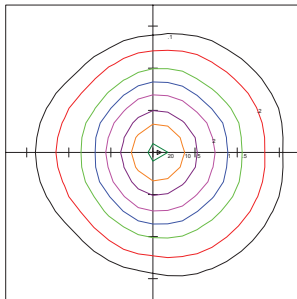


BUG REPORT
TAMLITE LIGHTING
WPALED505K
Luminaire Lumens:
Front:
Low=954.4, Medium=1632.8,
High=424.5, Very High=24.0
Back:
Low=751.2, Medium=1037.7,
High=256.9, Very High=26.4
Uplight:
Low=0.0, High=0.0

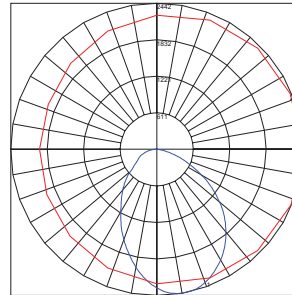
BUG Rating : B2-U0-G1



	LUMENS	PERCENT OF LAMP
DOWNWARD STREET SIDE	3026.7	59.4
DOWNWARD HOUSE SIDE	2072.1	40.6
DOWNWARD TOTAL	5098.9	100.0
UPWARD STREET SIDE	0.00	.0
UPWARD HOUSE SIDE	0.00	.0
UPWARD TOTAL	0.00	.0
TOTAL FLUX	5098.9	100.0



TAMLITE LIGHTING
WPALED505K
Horizontal Footcandles
Light Loss Factor = 1.0
Lumens Per Lamp = N.A.
Lumens = 5099.0
Mounting Height = 10.0 Ft
Maximum Calculated Value = 23.2 Fc
Arrangement: Single



Polar Graph
Maximum Candela = 2442.08
Located at Horizontal Angle = 360.0
Vertical Angle = 11.0
Vertical Plane Through Horizontal Angles (360 - 180)
Horizontal Cone Through Vertical Angle (11)