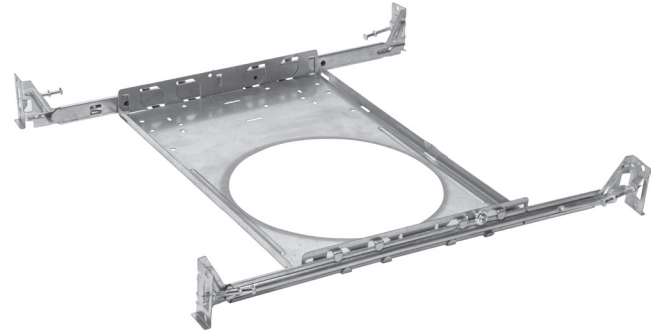


MODEL :		TYPE
PROJECT :		
PREPARED BY :	DATE :	

SERIES SPECIFICATIONS

ROUGH SERIES

The 4" and 6" rough-in plates are ideal for easier layout planning and new construction pre-wiring. It is made of durable steel (0.19) and fits up to 24" spaced studs. Rough-in plates come with double headed nails and holding screws.



CONSTRUCTION

Material

Galvanized Steel

Material Thickness

0.19

Mounting

Hanger Bars

Fastening

Double headed nails and holding screws

ORDERING INFORMATION

Sample Part Number: ROUGH4-HB

ROUGH		-HB
SERIES	SIZE	MOUNTING
ROUGH	[4] : 4"	[-HB] : HANGER BARS
	[6] : 6"	