



CONTRACTOR:	
PROJECT:	DATE:
PREPARED BY:	MODEL#: TLD6TR28

**SERIES SPECIFICATIONS**



**TLD6 SERIES**

**6" 28W Dimmable LED Trim**

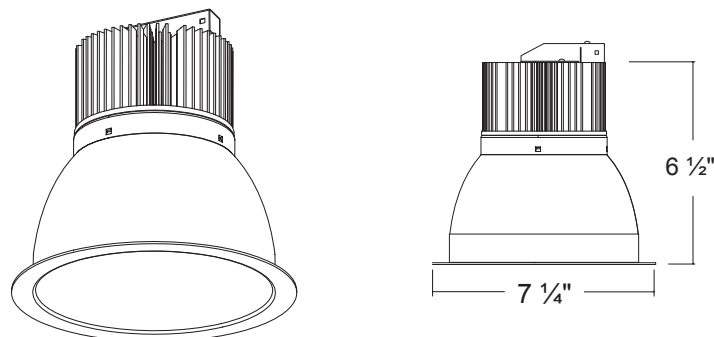
The TLD6 series are high grade LED high lumen down lights with a deep cone reflector that is designed for commercial lighting. These 6-inch, LED down lights are loaded with innovative features and options.



**CONSTRUCTION**

<b>Material</b> Aluminum	<b>Color Temp.</b> 3000K/3500K/4000K	<b>Lumens</b> 1900	<b>Warranty</b> Guaranteed for five years from the purchase date of the product, against mechanical defects in manufacturing
<b>Flange</b> Self-flanged	<b>CRI</b> 90	<b>Dimming Type</b> 0-10V	
<b>Heat Sink</b> Diecast aluminum	<b>Efficiency</b> 68 lm/W	<b>Operating Temp.</b> -30°C ~ 40°C	
<b>Finish</b> Haze	<b>Dimming Range</b> 10-100%	<b>Listing</b> UL Listed	
<b>Input Wattage</b> 28W	<b>Frequency</b> 50/60Hz	<b>Location Rating</b> Suitable for wet locations	

**LINE DRAWING**



APPLICATION AND PERFORMANCE SPECIFICATION IS SUBJECT TO CHANGE WITHOUT NOTIFICATION



CONTRACTOR:	
PROJECT:	DATE:
PREPARED BY:	MODEL#: TLD6TR28

**ORDERING INFO**

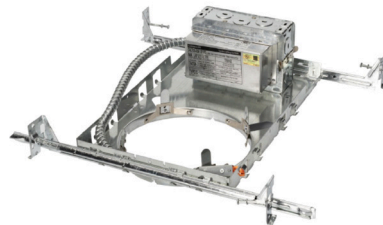
EXAMPLE: TLD6TR2830K-HZ

SERIES	WATTAGE*	COLOR TEMPERATURE	OPTIONS
TLD6TR	[ 28 ] : 28 Watts	[ 30K ] : 3000K	[ -HZ ] : Haze
		[ 35K ] : 3500K	
		[ 40K ] : 4000K	

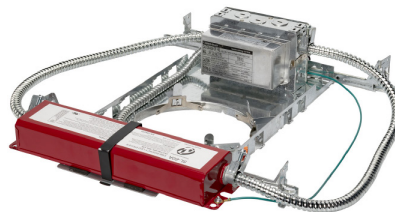
\*Housing and Trim wattages must match. Not for installation in coastal environments.

**HOUSING OPTIONS**

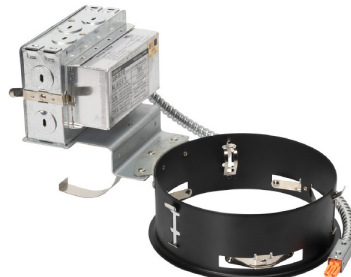
**TLD6NW28-UNV**  
6" 28W DIMMABLE LED NEW WORK HOUSING



**TLD6NW28-UNV-EM**  
6" 28W DIMMABLE LED EMERGENCY NEW WORK HOUSING



**TLD6RM28-UNV**  
6" 28W DIMMABLE LED REMODEL HOUSING



\*Housings sold separately.

APPLICATION AND PERFORMANCE SPECIFICATION IS SUBJECT TO CHANGE WITHOUT NOTIFICATION