



| | |
|--------------|---------|
| CONTRACTOR: | |
| PROJECT: | DATE: |
| PREPARED BY: | MODEL#: |

SERIES SPECIFICATIONS



TRRMUC SERIES

The TRRMUC under cabinet lights allow for a hidden installation while providing continuous linear light.



FEATURES & SPECIFICATIONS

Intended Use:

LED under cabinets are perfect for installations in showcases, display cases, furniture, or under cabinets.

Construction:

The body is constructed of extruded aluminum with plastic end caps.

Optics:

Frosted acrylic lenses provide optimum light while reducing glare.

Electrical:

Long-life LEDs, coupled with high-efficiency drivers, provide extended service life. Thermally protected driver standard.

Installation:

Fixture mounts to provided mounting clips.

Listings:

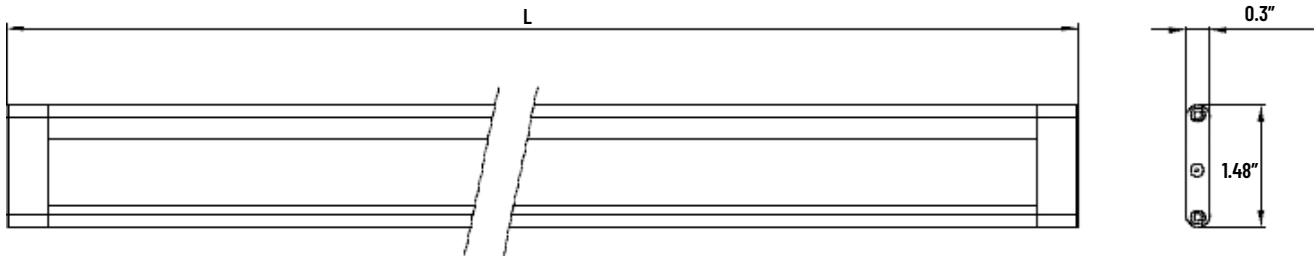
UL listed to US and Canadian safety standards. Dry location listed. For use in ambient operating temperatures ranging from -20°C to 40°C.

Warranty:

3-year limited warranty.

NOTE: Actual performance may differ as a result of end-user environment and application. All values are design or typical values, measured under laboratory conditions at 25 °C. Specifications subject to change without notice.

LINE DRAWINGS



ORDERING INFORMATION

Example: TRRMUC1205WH

| SERIES | LENGTH | WATTAGE | COLOR | TEMPERATURE |
|--------|-------------------------------------|-----------------------------------|-------------|--------------------------------|
| TRRMUC | [12]: 12" [20]: 20" [40]: 40" | [05]: 5W [08]: 8W [15]: 15W | [WH]: White | [Blank]: 3000K [-4K]: 4000K |

| | |
|--------------|---------|
| CONTRACTOR: | |
| PROJECT: | DATE: |
| PREPARED BY: | MODEL#: |

ELECTRICAL SPECIFICATIONS

| PART NUMBER | LENGTH | NUMBER OF LED'S | BEAM ANGLE | COLOR TEMP. | LUMENS |
|--------------|--------|-----------------|------------|-------------|--------|
| TRRMUC1205WH | 12" | 49 | 180° | 3000K/4000K | 350lm |
| TRRMUC2008WH | 20" | 77 | 180° | 3000K/4000K | 560lm |
| TRRMUC4015WH | 40" | 147 | 180° | 3000K/4000K | 1050lm |

ACCESSORIES



TRRMUC-DS
DOUBLE SENSOR



TRRMUC-CC
1 METER CONNECTOR CABLE



TRRMUC-TD
TOUCH DIMMER



TRRMUC-MS
MASTER SWITCH



TRRMUC-FCC
FLAT CORNER CONNECTOR



TRRMUC-AB
ADJUSTABLE BRACKET



TRRMUC-BC
BUTT CONNECTOR



TRRMUC-48WD
48W DRIVER



TRRPL-DIMMER
INLINE DIMMER



TRRPL-8WAY
8 WAY SPLITTER



TRRPL-4WAY
4 WAY SPLITTER