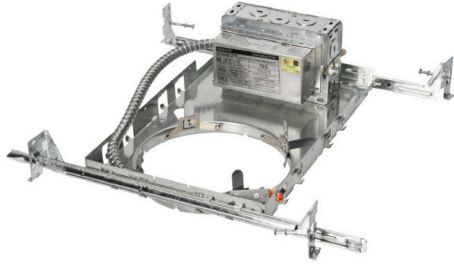


CONTRACTOR:	
PROJECT:	DATE:
PREPARED BY:	MODEL#: TLD6NW28-UNV

SERIES SPECIFICATIONS



15W 28W 48W

TLD6NW SERIES

6" Commercial New Work Frame

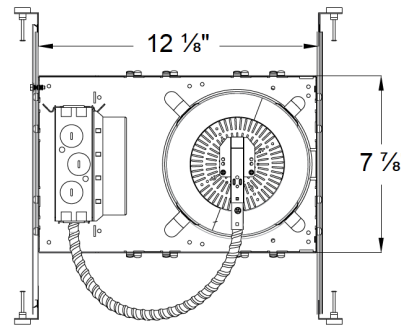
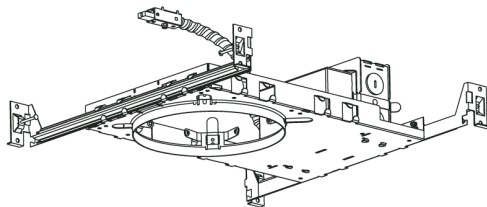
The TLD6 series are high grade LED high lumen down lights with a deep cone reflector that is designed for commercial lighting. These 6-inch, LED down lights are loaded with innovative features and options.



CONSTRUCTION

Material Steel	Input Current 0.26A	Operating Temp. -30°C ~ 40°C
Junction Box Mounted on housing frame	Dimming Type 0-10V	Listing UL Listed
Input Wattage 28W	Frequency 50/60Hz	Warranty Guaranteed for five years from the purchase date of the product, against mechanical defects in manufacturing
Input Voltage 120/277VAC	Power Factor > 0.9	

LINE DRAWING





CONTRACTOR:	
PROJECT:	DATE:
PREPARED BY:	MODEL#: TLD6NW28-UNV

ORDERING INFO

EXAMPLE: TLD6NW28-UNV

SERIES	WATTAGE*	VOLTAGE
TLD6NW	[28] : 28 Watts	[-UNV] : 120/277V

*Housing and Trim wattages must match. Not for installation in coastal environments.