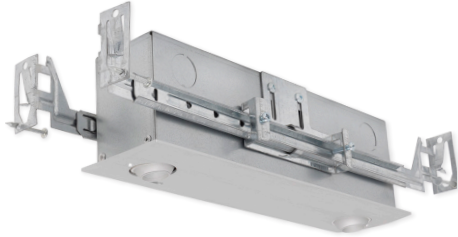




CONTRACTOR:	
PROJECT:	DATE:
PREPARED BY:	MODEL#: RM800-RC

## SERIES SPECIFICATIONS



### RM800-RC series

The RM800-RC is an aluminum recessed high lumen LED emergency light with remote capability and adjustable lamp heads.



## CONSTRUCTION/ WARRANTY

### Construction

Slim type design Aluminum Alloy

### Illumination

Two fully adjustable high lumen 2.5W LED lamp heads, 400 Lumens

### Color Temperature

5000K

### Installation

Recessed mounting design

### Remote Capable

LSRH1/LSRH2 Series or WRLRH1/WRLRH2 Series

### Listing

UL Listed

### Compliance

UL 924, Damp Location IP20, NFPA 101 Life Safety Code, NEC, OSHA, Local and State Codes.

### Location Rating

Suitable for damp locations

### Warranty

Guaranteed for five years from the purchase date of the product, against mechanical defects in manufacturing.

## ELECTRICAL SPECIFICATIONS

**Battery Type:** 2 X Ni-MH 3.6V-2500mah

**Low Voltage Disconnect:** Prevents battery from deep discharge

**Operating Voltage:** 120/277V

**Lamp head:** 2.5W per head

**Emergency Illumination:** Minimum 90 minutes

**LED Indicator:** Charge rate/power "ON" and push to test switch

**Battery Recharge Time:** 24hrs.

**Remote Watt max:** 2.8W

**Lumen Output:** 400 lumens

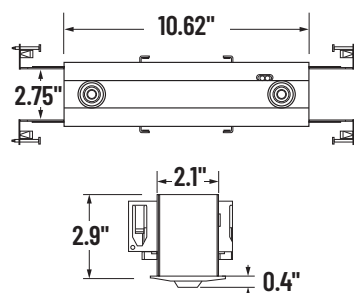
**Battery Discharge Time:** 1.5hrs.

**Power Consumption:** Max 3W

**Ambient Temperature:** 10C - 40C

**Frequency:** 60 Hz

## LINE DRAWING





CONTRACTOR:	
PROJECT:	DATE:
PREPARED BY:	MODEL#: RM800-RC

**ORDERING INFORMATION**

EXAMPLE: RM800-RC

SERIES	HOUSING COLOR	OPTIONS
RM800	Blank: Aluminum	RC: Remote Capable

**LUMINOUS INTENSITY DISTRIBUTION**

