



CONTRACTOR:	
PROJECT:	DATE:
PREPARED BY:	MODEL#:

DESCRIPTION



RSPLED Series

The RSPLED Linear Architectural series provides a modern aesthetic to retail and office spaces. The RSPLED can be linked together to form custom layouts and comes in several different mounting styles to facilitate custom, vibrant layouts while delivering excellent and efficient light output.



FEATURES AND SPECIFICATIONS

Construction

The body is constructed of precision cut 6063 extruded aluminum manufactured in America with powder coat finish.

Optics

Optional Opaque Acrylic Lens provides diffusion while sacrificing minimal lumen output.

Dimming

LED Drivers deliver dimming from a 0-10v control signal. Dims to 10% standard. (Uplight and Downlight circuits are not separate.)

Installation

- Cable Mount via 48" suspended hanging kit (included when ordering Cable Mount)
- Pendant Mount via 3/4" pendant rod (Not included)
- Recessed Hard-lid Mount via rough-in box (Included when Ordering Recessed Hard-lid Mount)
- T-Grid Recessed Mount via Recessed Hangers (Included when Ordering T-Grid Recessed Mount)

Contact factory for connected mounting options and custom layout requests. Units are built and designed around mounting options and cannot be reworked after production begins. Additionally, Pendant Rods are not provided by TamLite Lighting and will need to be sourced by the customer.

NOTE: RSPLEDs are not designed for wireway application, each fixture requires it's own power/control drop.

Listing

UL listed to US and Canadian safety standards. For use in ambient operating temperatures ranging from -30°C to 40°C. Fixture is Buy American Act (BAA) compliant.

Warranty

5-year limited warranty.

IMPORTANT: In order to maintain proper operation and warranty coverage for units with Emergency backup, the battery must be recharged once per year prior to installation.

NOTE: Actual performance may differ as a result of end-user environment and application. All values are design or typical values, measured under laboratory conditions at 25 °C. Specifications subject to change without notice.

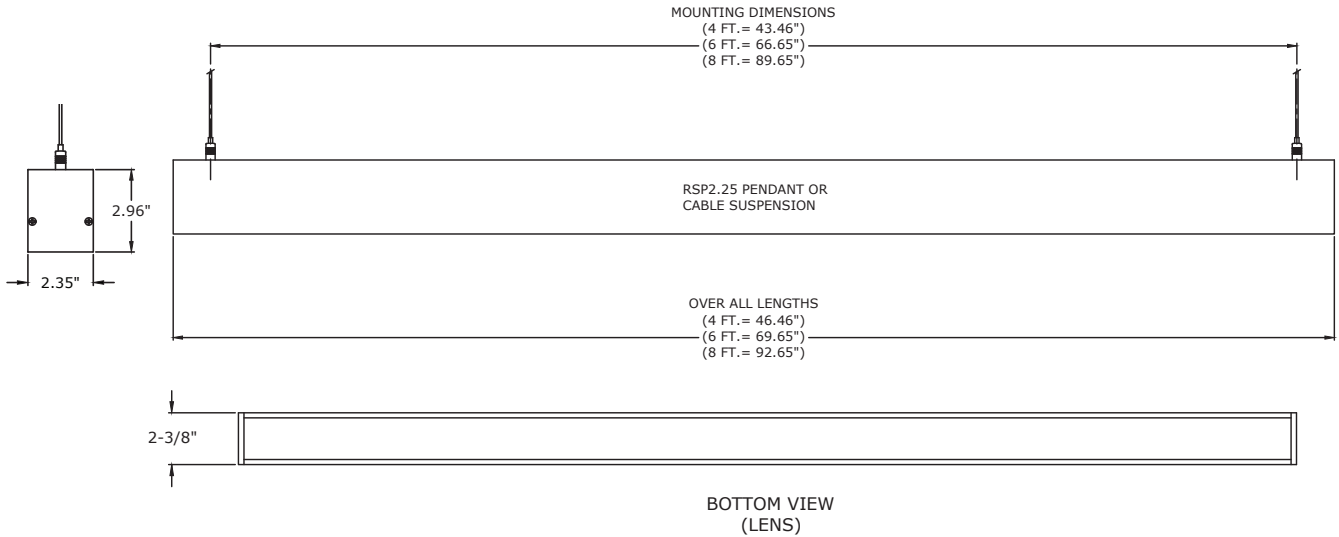


CONTRACTOR:	
PROJECT:	DATE:
PREPARED BY:	MODEL#:

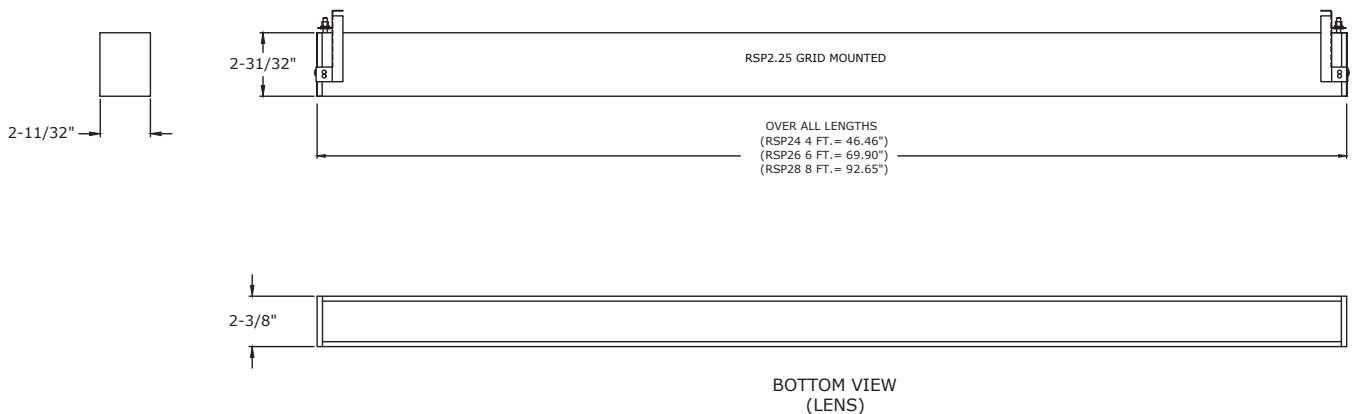
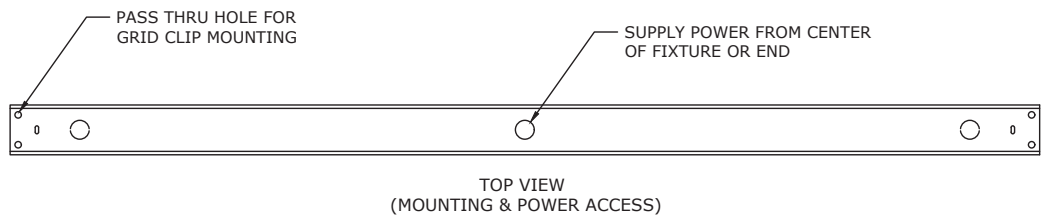
LINE DRAWINGS

Pendant or Cable Mounting*

*Please note, pendant and cable mount fixtures are built differently and hardware is not interchangeable.



Recessed Grid Mounting



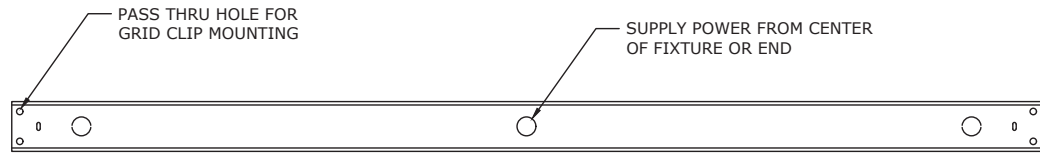
APPLICATION AND PERFORMANCE SPECIFICATION IS SUBJECT TO CHANGE WITHOUT NOTIFICATION



CONTRACTOR:	
PROJECT:	DATE:
PREPARED BY:	MODEL#:

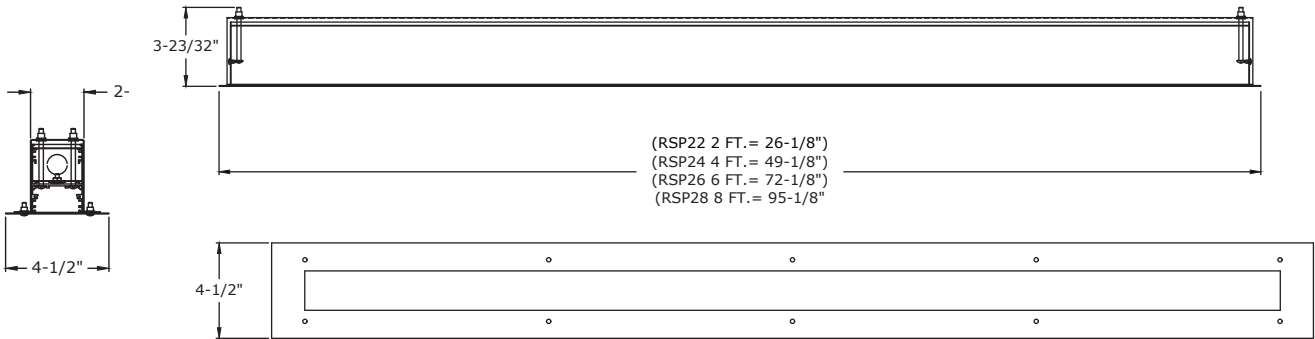
LINE DRAWINGS

**Hard-Lid
Recessed Mounting**



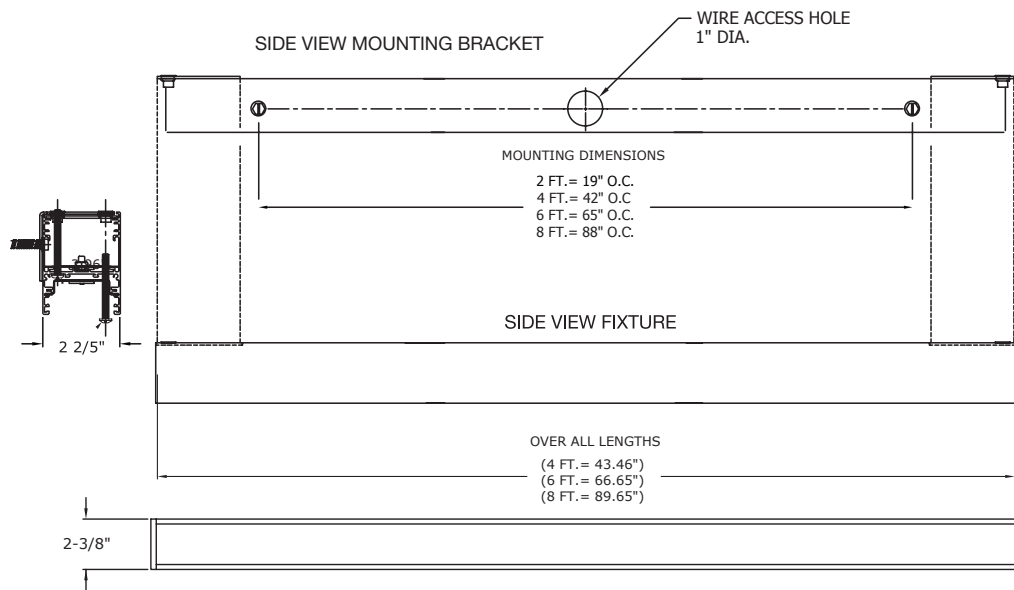
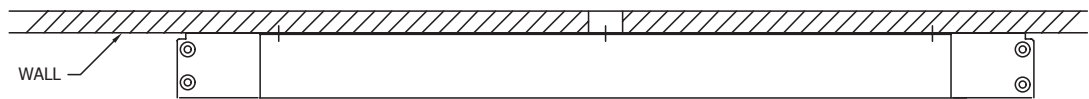
TOP VIEW
(MOUNTING & POWER ACCESS)

RSP2.25 RECESSED MOUNTED



BOTTOM VIEW
(LENS COVER)

**Wall
Mounting**



BOTTOM VIEW
(LENS)

APPLICATION AND PERFORMANCE SPECIFICATION IS SUBJECT TO CHANGE WITHOUT NOTIFICATION



CONTRACTOR:	
PROJECT:	DATE:
PREPARED BY:	MODEL#:

ORDERING INFORMATION

Example: RSPLED22-20D1CL830

SERIES	SIZE & LUMEN OUTPUT	WITHOUT UP LIGHTING	MOUNTING OPTION	LENS	CRI	COLOR TEMP	UP LIGHTING***	OPTIONS	FINISH
RSPLED	[22-20] : 2" x 2' 2000Lm	[D1] : 120-277VAC	[C] : Cable Mount	[Blank] : No Lens	[L8] : CRI	[30] : 3000K	[Blank] : No Up Lighting	[Blank] : No Options	[Blank] : White (Standard)
	[24-40] : 2" x 4' 4000Lm	[E1] : 277-480VAC	[P] : Pendant Mount*	[01] : Opaque	+/- 85	[35] : 3500K	[U30] : 30% Up Light	[-EM] : Emergency Backup	[BK] : Black
	[26-60] : 2" x 6' 6000Lm	WITH UP LIGHTING	[R] : Recessed Hard-lid Mount	Acrylic		[40] : 4000K	[U40] : 40% Up Light		[GY] : Grey
	[28-80] : 2" x 8' 8000Lm	[D2] : 120-277VAC	[G] : T-Grid Recessed Mount**			[50] : 5000K	[U50] : 50% Up Light		[RAL] : Custom Color****
		[E2] : 277-480VAC	[W] : Wall Mount						

*Pendant Mounting Rod not included and will need to be sourced by the customer.
**T-Grid Recessed Mount is not available in Z' configurations.

***Uplighting not available on Recessed, Grid Mount, and Z' configurations, percentages are based on down light lumen output.
****MOQ Required - Please contact factory for details and provide an RAL number for color.

PERFORMANCE SPECIFICATIONS

SERIES	LUMENS DOWN*	LPW	WATTAGE
RSPLED22-20	2000 Lumens	88	25W
RSPLED24-40	4000 Lumens	144	27W
RSPLED26-60	6000 Lumens	155	39W
RSPLED28-80	8000 Lumens	153	49W

*Up Lighting is based off of % of Lumens down. Example: a RSPLED24-40 with U50 will provide 50% up (2000lm)

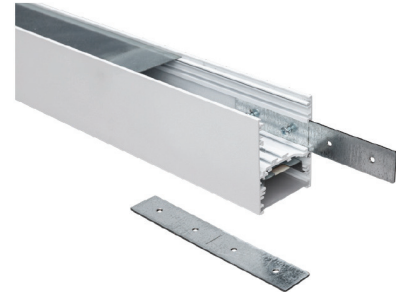


CONTRACTOR:	
PROJECT:	DATE:
PREPARED BY:	MODEL#:

ACCESSORIES

Joiners*

*Custom angle joiners/brackets available, may require custom designed RSPLED fixtures, contact factory for details. Please note that RSPLEDs are not designed for wireway application, each fixture requires it's own power/control drop.



RSPJOINTER-KIT-SF

0642-8091

RSP LINEAR JOINER KIT (2 JOINERS with 8 SCREWS)

Hanger Kits*

*Hanger kits are designed for use with cable mount fixtures only and are included with each unit. If you are ordering a custom color unit, please be sure to specify which color hanger kit you need.



CH48"-CORD 5 WIRE DIM

0392-2215

48" Cable Hanger Kit for RSPLED 5-WIRE



CH48"-CORD-5WIRE-DIM-BLACK

0611-6604

48" Cable Hanger Kit for RSPLED 5-WIRE - Black

CH48"-CORD-6WIRE-EM-DIM

0392-2203

48" Cable Hanger Kit for RSPLED-EM 6-WIRE



CH48"-CORD 6 WIRE DIM-BLACK

0635-9421

48" Cable Hanger Kit for RSPLED-EM 6-WIRE - Black

