



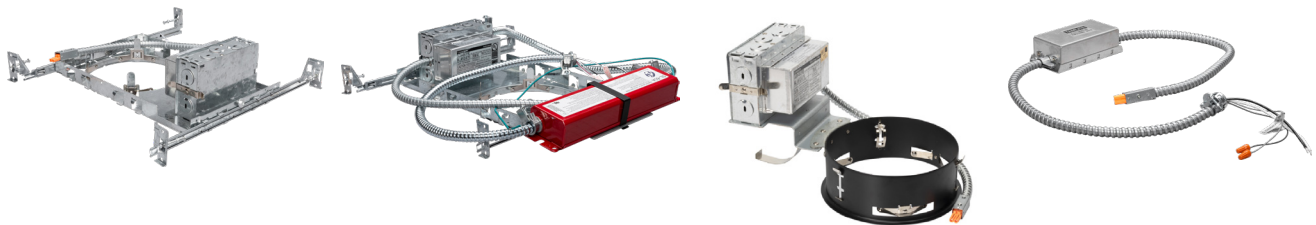
CONTRACTOR:	
PROJECT:	DATE:
PREPARED BY:	MODEL#: TLD SERIES

DESCRIPTION



TLD Series

The TLD series LED high lumen down light features a deep cone reflector designed to match traditional commercial downlighting applications. The housing options (Sold Separately) allow for easier installation into your custom application without wasted materials.



FEATURES & SPECIFICATIONS

Construction

Trims are made from Die Cast Aluminum with a white powdercoat finish on the flange. Housings and Retrofits are made of steel construction.

Optics

Opaque Arcylic Lens provides diffusion while sacrificing minimal lumen output

Dimming

LED Drivers deliver dimming from a 0-10v control signal. Dims to 10% standard.

Installation

New Work, Remodel, and Retrofit Options available. Suitable for wet locations, not suitable for coastal environments. Not IC-Rated.

Listings

UL listed to US and Canadian safety standards. For use in ambient operating temperatures ranging from -30°C to 40°C.

Warranty

5-year limited warranty.

IMPORTANT: In order to maintain proper operation and warranty coverage for units with Emergency backup, the battery must be recharged once per year prior to installation.

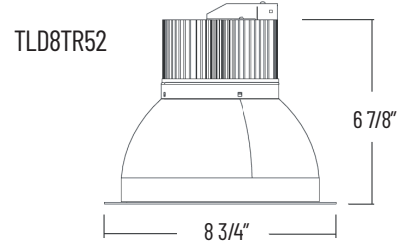
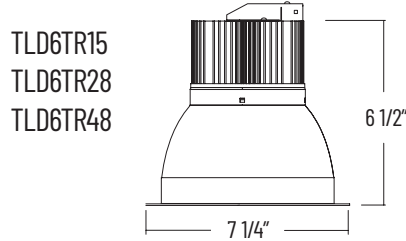
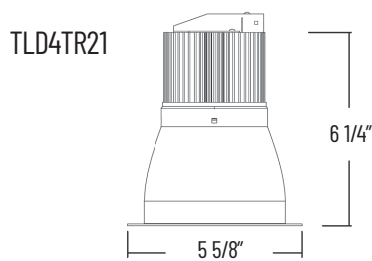
NOTE: Actual performance may differ as a result of end-user environment and application. All values are design or typical values, measured under laboratory conditions at 25 °C. Specifications subject to change without notice.



CONTRACTOR:	
PROJECT:	DATE:
PREPARED BY:	MODEL#: TLD SERIES

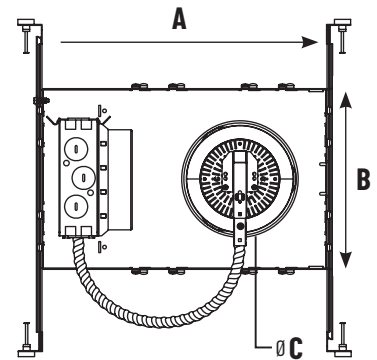
LINE DRAWINGS

TLD TR Series



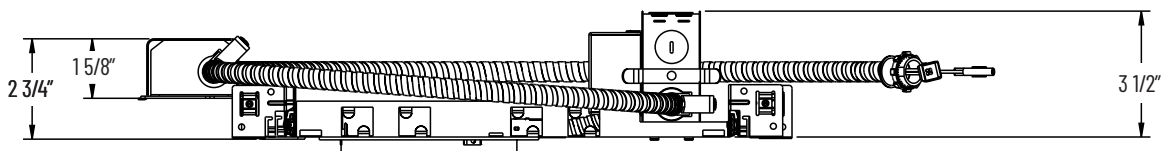
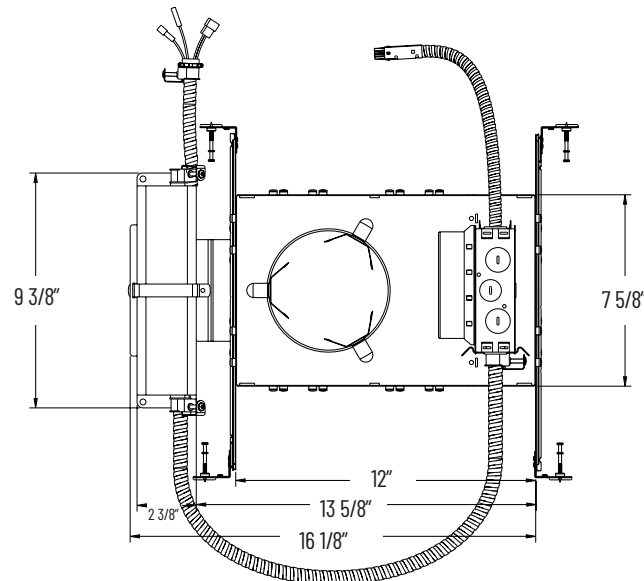
TLD NW Series

MODEL	A	B	C
TLD4NW21-UNV	12 1/8"	7 3/4"	4"
TLD6NW15-UNV TLD6NW28-UNV TLD6NW48-UNV	12 1/8"	7 7/8"	6"
TLD8NW52-UNV	12 3/4"	9"	8"



TLD NW EM Series

- TLD4NW21-UNV-EM
- TLD6NW28-UNV-EM
- TLD6NW48-UNV-EM
- TLD6NW15-UNV-EM



APPLICATION AND PERFORMANCE SPECIFICATION IS SUBJECT TO CHANGE WITHOUT NOTIFICATION

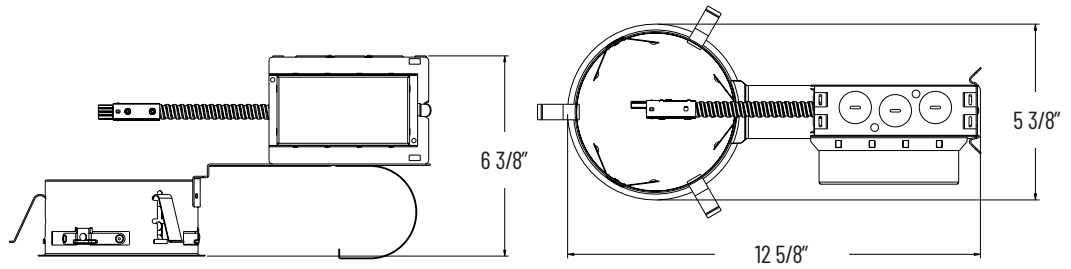


CONTRACTOR:	
PROJECT:	DATE:
PREPARED BY:	MODEL#: TLD SERIES

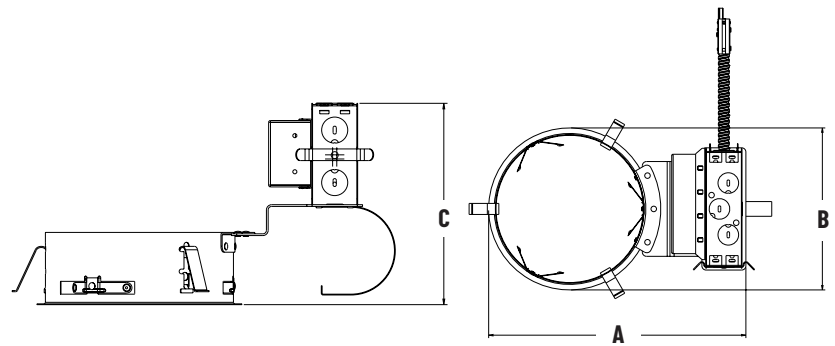
LINE DRAWINGS

TLD RM Series

TLD4RM21-UNV

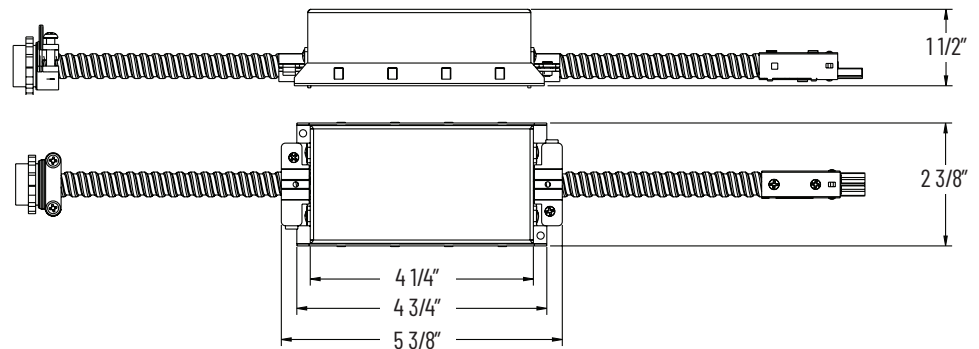


MODEL	A	B	C
TLD6RM28	11"	6 7/8"	6 3/4"
TLD6RM48	11"	6 7/8"	6 3/4"
TLD8RM-UNV	12 3/4"	8 1/2"	6 3/4"



TLD RW Series

TLDRW21-UNV
TLDRW28-UNV
TLDRW48-UNV
TLDRW52-UNV



APPLICATION AND PERFORMANCE SPECIFICATION IS SUBJECT TO CHANGE WITHOUT NOTIFICATION



CONTRACTOR:	
PROJECT:	DATE:
PREPARED BY:	MODEL#: TLD SERIES

ORDERING INFO

TRIM ORDERING INFORMATION

EXAMPLE: TLD4TR2103K-HZ

SERIES	SIZE & WATTAGE*	COLOR TEMPERATURE	OPTIONS
TLD	[4TR21] : 4" Trim x 21 Watts [6TR15] : 6" Trim x 15 Watts [6TR28] : 6" Trim x 28 Watts [6TR48] : 6" Trim x 48 Watts [8TR52] : 8" Trim x 52 Watts	[30K] : 3000K [35K] : 3500K [40K] : 4000K	[-HZ] : Haze

*Please note that the wattage of the Trim must match the wattage of the Housing or Retrofit Whip. These fixtures are not suitable for coastal environments.

NEW WORK HOUSING ORDERING INFORMATION

EXAMPLE: TLD4NW21-UNV

SERIES	SIZE & WATTAGE*	VOLTAGE	OPTIONS
TLD	[4NW21] : 4" NW Housing x 21 Watts [6NW15] : 6" NW Housing x 15 Watts [6NW28] : 6" NW Housing x 28 Watts [6NW48] : 6" NW Housing x 48 Watts [8NW52] : 8" NW Housing x 52 Watts	[-UNV] : 120/277V	[Blank] : No Option [-EM] : Emergency Driver**

*Please note that the wattage of the Trim must match the wattage of the Housing or Retrofit. These fixtures are not suitable for coastal environments.

**Emergency Driver not available on TLD6NW15-UNV

REMODEL HOUSING ORDERING INFORMATION

EXAMPLE: TLD4RM21-UNV

SERIES	SIZE & WATTAGE*	VOLTAGE
TLD	[4NW21] : 4" RM Housing x 21 Watts [6NW28] : 6" RM Housing x 28 Watts [6NW48] : 6" RM Housing x 48 Watts [8NW52] : 8" RM Housing x 52 Watts	[-UNV] : 120/277V

*Please note that the wattage of the Trim must match the wattage of the Housing or Retrofit. These fixtures are not suitable for coastal environments.

RETROFIT WHIP ORDERING INFORMATION

EXAMPLE: TLD4RW21-UNV

SERIES	WATTAGE*	VOLTAGE
TLD4RW	[21] : 21 Watts [28] : 28 Watts [48] : 48 Watts [52] : 52 Watts	[-UNV] : 120/277V

*Please note that the wattage of the Trim must match the wattage of the Housing or Retrofit. These fixtures are not suitable for coastal environments.



CONTRACTOR:	
PROJECT:	DATE:
PREPARED BY:	MODEL#: TLD SERIES

PERFORMANCE SPECIFICATIONS

MODEL	LUMENS DOWN	LPW	WATTAGE	CRI	FREQUENCY
TLD4TR21	1400 Lumens	69 lm/W	21w	90	50/60Hz
TLD6TR15	1000 Lumens	71 lm/W	15w	90	50/60Hz
TLD6TR28	1800 Lumens	64 lm/W	28w	90	50/60Hz
TLD6TR48	3400 Lumens	71 lm/W	48w	90	50/60Hz
TLD8TR52	4200 Lumens	80 lm/W	52w	90	50/60Hz

APPLICATION AND PERFORMANCE SPECIFICATION IS SUBJECT TO CHANGE WITHOUT NOTIFICATION