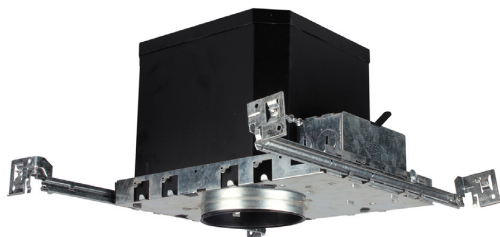




CONTRACTOR:	
PROJECT:	DATE:
PREPARED BY:	MODEL#:

**SERIES SPECIFICATIONS**



**TRRIC SERIES**

**4" Fire Rated Housing**

The TRRIC series is UL fire rated and can be protected for 2 hours with a double wall fixture incorporates a non-combustible fiber insulation to prevent flames, toxic gases, and ignition gases from passing through.



**FEATURES AND SPECIFICATIONS**

**Intended Use**

The TRRIC series is suitable for condominiums, apartment buildings, multi-family, commercial and residential applications. Luminaire provides up to 2 hours of protection in L500, L505, L511, L536, L538, L541, L556, L577, M500, M510, M521 and M543 Floor-Ceiling Designs.

**Construction**

The galvanized iron frame, corrosion resistant iron can, and HGI outer box is a double wall fixture that incorporates a non-combustible fiber insulation to prevent flames, toxic gases, and ignition gases from passing through.

**Dimming**

Fixture is dimmable using line voltage TRIAC at 120V

**Installation**

Remote driver allows for an easy installation to stud while the spring loaded clips in the fixture allow for quick installation while pulling the fixture flush to the mounting hole.

**Listings**

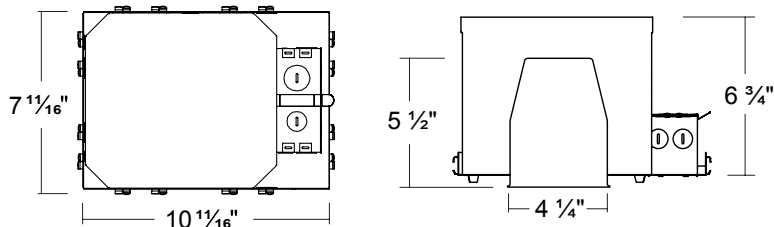
UL listed to US and Canadian safety standards.

**Warranty**

1-year limited warranty.

NOTE: Actual performance may differ as a result of end-user environment and application. All values are design or typical values, measured under laboratory conditions at 25 °C. Specifications subject to change without notice.

**LINE DRAWING**



APPLICATION AND PERFORMANCE SPECIFICATION IS SUBJECT TO CHANGE WITHOUT NOTIFICATION



CONTRACTOR:	
PROJECT:	DATE:
PREPARED BY:	MODEL#:

**ORDERING INFO**

EXAMPLE: TRRIC104AT-FR

SERIES	CONFIGURATION	TYPE	STYLE
TRRIC	[ 104 ]: 4" Housing	[ AT ]: Air Tight	[ -FR ]: Fire Rated

APPLICATION AND PERFORMANCE SPECIFICATION IS SUBJECT TO CHANGE WITHOUT NOTIFICATION