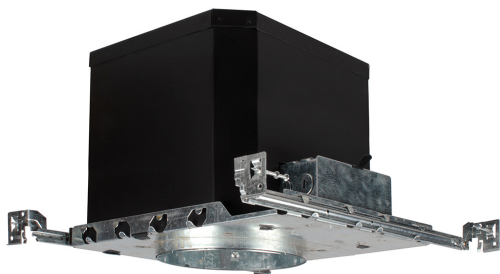




CONTRACTOR:	
PROJECT:	DATE:
PREPARED BY:	MODEL#:

SERIES SPECIFICATIONS



TRRIC SERIES

6" Fire Rated Housing

The TRRIC series is UL fire rated and can be protected for 2 hours with a double wall fixture incorporates a non-combustible fiber insulation to prevent flames, toxic gases, and ignition gases from passing through.



FEATURES AND SPECIFICATIONS

Intended Use

The TRRIC series is suitable for condominiums, apartment buildings, multi-family, commercial and residential applications. Luminaire provides up to 2 hours of protection in L500, L505, L511, L536, L538, L541, L556, L577, M500, M510, M521 and M543 Floor-Ceiling Designs.

Construction

The galvanized iron frame, corrosion resistant iron can, and HGI outer box is a double wall fixture that incorporates a non-combustible fiber insulation to prevent flames, toxic gases, and ignition gases from passing through.

Dimming

Fixture is dimmable using line voltage TRIAC at 120V

Installation

Remote driver allows for an easy installation to stud while the spring loaded clips in the fixture allow for quick installation while pulling the fixture flush to the mounting hole.

Listings

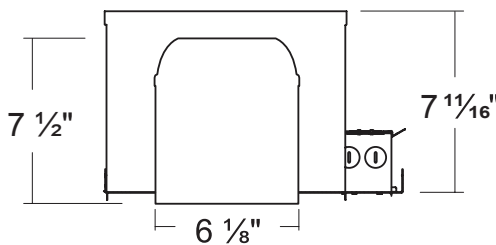
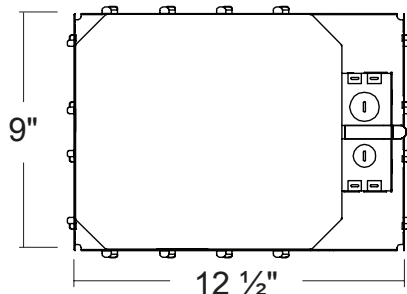
UL listed to US and Canadian safety standards.

Warranty

1-year limited warranty.

NOTE: Actual performance may differ as a result of end-user environment and application. All values are design or typical values, measured under laboratory conditions at 25 °C. Specifications subject to change without notice.

LINE DRAWING



APPLICATION AND PERFORMANCE SPECIFICATION IS SUBJECT TO CHANGE WITHOUT NOTIFICATION



CONTRACTOR:	
PROJECT:	DATE:
PREPARED BY:	MODEL#:

ORDERING INFO

EXAMPLE: TRRIC206ATQ-FR

SERIES	CONFIGURATION	TYPE	STYLE
TRRIC	[206]: 6" Housing	[ATQ]: Air Tight	[-FR]: Fire Rated

APPLICATION AND PERFORMANCE SPECIFICATION IS SUBJECT TO CHANGE WITHOUT NOTIFICATION