



CONTRACTOR:	
PROJECT:	DATE:
PREPARED BY:	MODEL#:

DESCRIPTION



MTRO Series

The MTR0 series canopy fixture is designed to illuminate outdoor covered areas, providing wide area light coverage. The weatherproof powder coated aluminum housing ensures a reliable service life. Ideal for surface mount applications such as parking garages, covered walkways and building entrances, it provides enhanced visibility and security for commercial settings.



CONSTRUCTION

Housing

Die cast aluminum. Three 1/2" & one 3/4" coin plug.

Finish

Bronze powder coat

Optics

High transmission polycarbonate

Dimming

0-10V

Operating Temperatures

-40°C~+40°C

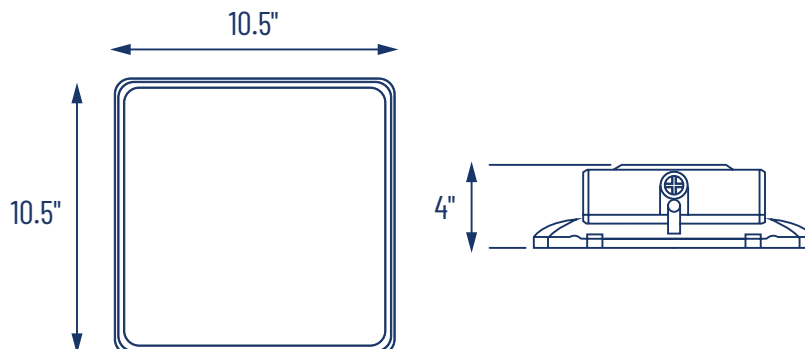
Listings

UL listed to US safety standards. Wet location listed.

Warranty

5-year limited warranty. NOTE: Actual performance may differ as a result of end-user environment and application. All values are design or typical values, measured under laboratory conditions at 25 °C. Specifications subject to change without notice.

LINE DRAWINGS



APPLICATION AND PERFORMANCE SPECIFICATION IS SUBJECT TO CHANGE WITHOUT NOTIFICATION



CONTRACTOR:	
PROJECT:	DATE:
PREPARED BY:	MODEL#:

ORDERING INFORMATION

Example: Example: MTR01-WS-3CS-BZ

SERIES	WATTAGE	COLOR TEMP.	FINISH
MTR0	[1-WS]: 23/34/45W [2-WS]: 35/53/70W	[-3CS] 3000/4000/5000K Color Select	[-BZ] Bronze [-WH] White

LIGHTING SPECIFICATIONS

SERIES	WATTAGE	LUMENS	LPW	VOLTAGE	CRI
MTR01-WS-3CS-BZ	23/34/45W	3200/4700/6050lm	139/138/134	120-347VAC	≥70
MTR02-WS-3CS-BZ	45/55/70W	6500/7700/9650lm	144/140/137	120-347VAC	≥70

ELECTRICAL SPECIFICATIONS

SERIES	MTR01-WS-3CS-BZ	MTR02-WS-3CS-BZ
Input Voltage (VAC)	120-347VAC	120-347VAC
Frequency Range (Hz)	50/60Hz	50/60Hz
Power Factor @ Full Load	>0.9	>0.9
Dimming Control 1-10V	0-10V	0-10V
Over Voltage Protection	YES	YES
Over Load Protection	YES	YES
Over Temperature protection	YES	YES
Output Short-Circuit Protection	YES	YES

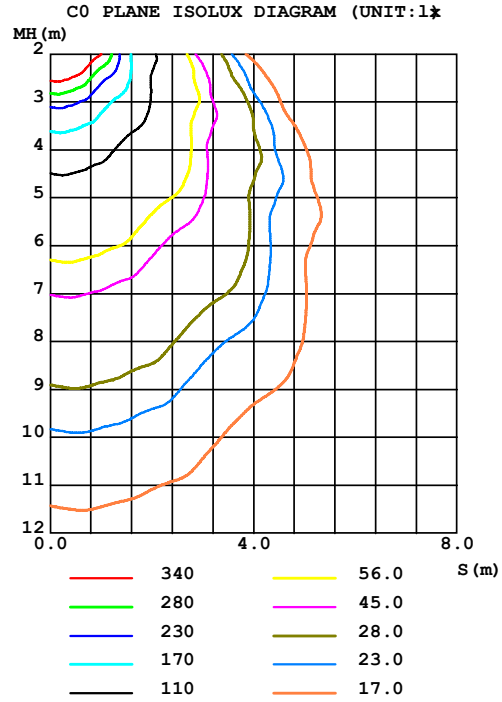
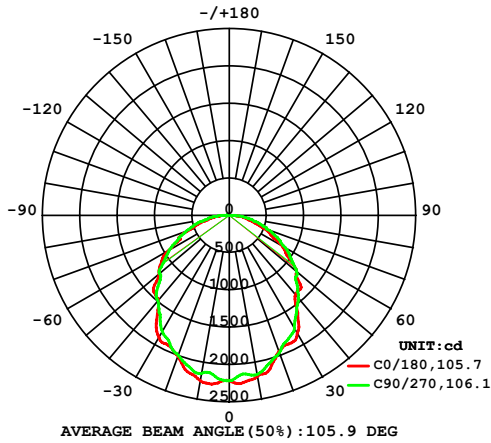
APPLICATION AND PERFORMANCE SPECIFICATION IS SUBJECT TO CHANGE WITHOUT NOTIFICATION



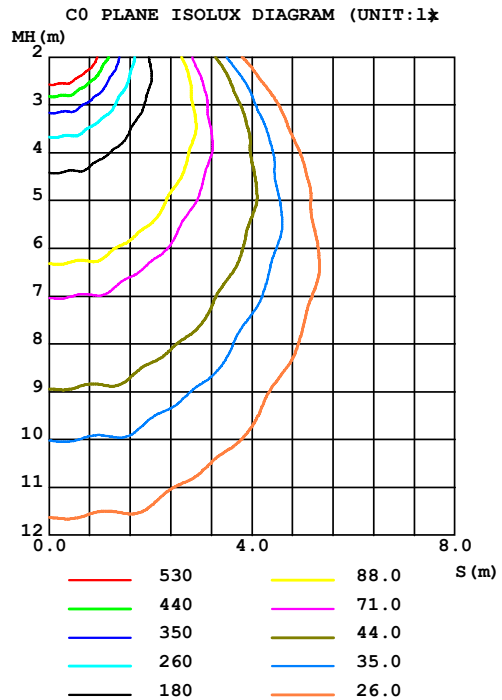
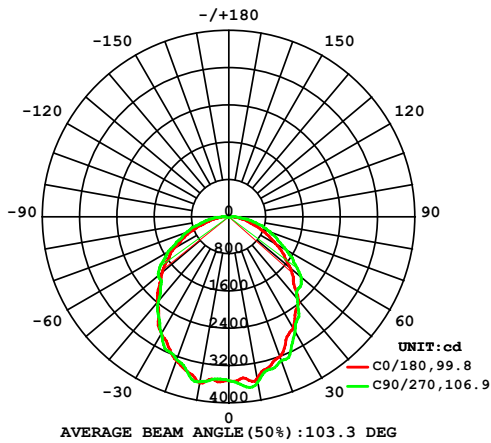
CONTRACTOR:	
PROJECT:	DATE:
PREPARED BY:	MODEL#:

PHOTOMETRICS

(45W)



(70W)



APPLICATION AND PERFORMANCE SPECIFICATION IS SUBJECT TO CHANGE WITHOUT NOTIFICATION

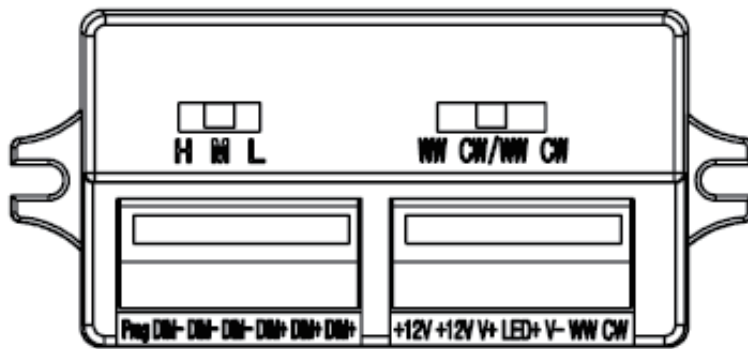


CONTRACTOR:	
PROJECT:	DATE:
PREPARED BY:	MODEL#:

ADJUSTMENT INFORMATION

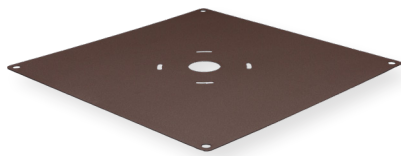
Color select switch is accessed inside the fixture housing. WW (3000K), NW (4000K), and CW (5000K) CCT.

Wattage select switch is also accessed inside the fixture housing. Wattage can be switched between H(High), M(Medium) and L(Low). Max wattage setting is default. MTR0 1WSCS 23/34/45W. MTR0 2WSCS 45/55/70W.



ACCESSORIES

Custom sizes available, contact factory for details.



TCOCCP13-BZ
0631-4310
13" Bronze Canopy Cover Back Plate



TCOCCP13-WH
0562-9050
13" White Canopy Cover Back Plate