



CONTRACTOR:	
PROJECT:	DATE:
PREPARED BY:	MODEL#:

DESCRIPTION



CLYG-5CS Series

The CLYG-5CS Series IC rated recessed LED gimbal wafer light features a remote driver allowing the fixture to minimize vertical height without the need for additional housings. Featuring 35° tilt with 355° of rotation, this fixture is designed for most directional lighting applications.



FEATURES AND SPECIFICATIONS

Construction

Remote mounted steel driver box and Aluminum housing for the LED array featuring 35° tilt with 355° of rotation.

Optics

Opaque Acrylic Lens provides diffusion while sacrificing minimal lumen output

Dimming

*10-100% Triac Dimming
120V Dimming Only

Input Voltage

120-277 VAC

Installation

Spring loaded clips on the LED array allow for quick installation. Mounting Holes on the remote mounted driver allow for the unit to be secured to joists.

Listings

ETL listed to US and Canadian safety standards. For use in ambient operating temperatures ranging from -22°F to 104°F.

Warranty

5-year limited warranty.

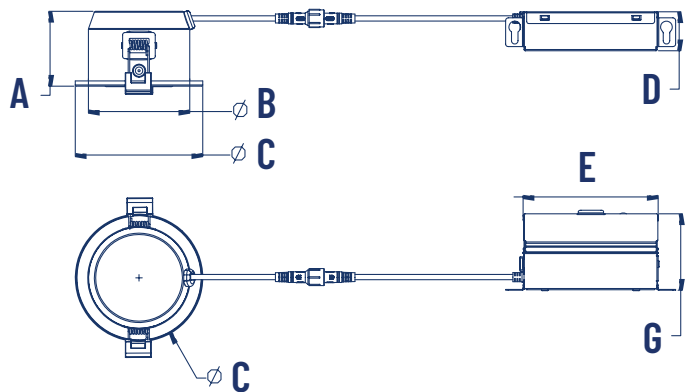
IMPORTANT: In order to maintain proper operation and warranty coverage for units with Emergency backup, the battery must be recharged once per year prior to installation.

NOTE: Actual performance may differ as a result of end-user environment and application. All values are design or typical values, measured under laboratory conditions at 25 °C. Specifications subject to change without notice.

LINE DRAWING

LED PANEL LIGHT GIMBAL

	CLY3G	CLY4G	CLY6G
WAFER DIMENSIONS			
A	2-1/4"	1 3/4"	2 3/8"
B	3"	3 3/8"	5 1/4"
C	3 7/8"	5 1/8"	7 1/4"
DRIVER DIMENSIONS			
D		1 1/8"	
E		4 1/8"	
G	2 1/4"		3"
CEILING OPENING	3 7/8"	5 1/8"	7 1/4"





CONTRACTOR:	
PROJECT:	DATE:
PREPARED BY:	MODEL#:

ORDERING INFORMATION

EXAMPLE: CLY3G-5CS-WH

SERIES	SIZE	TRIM	COLOR TEMPERATURE	TRIM COLOR
CLY	[3] : 3" [4] : 4" [6] : 6"	[G] : Gimbal Trim	[-5CS] : 2700/3000/3500/4000/5000K Color Select	[-WH] : White Color Trim

LIGHTING & ELECTRICAL SPECIFICATIONS

SERIES	LUMENS @ 3000K	LPW	WATTAGE	CRI
CLY3G-5CS-WH	500	62	8	90
CLY4G-5CS-WH	600	75	8	90
CLY6G-5CS-WH	900	66	13.5	90

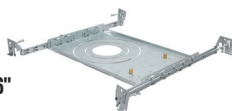
ACCESSORIES

*Accessories sold separately

ROUGH IN PLATES

ROUGH-HB
0642-8091

ALL-IN-ONE 3",4",6"
ROUGH IN PLATE
w/HANGER BARS



ROUGH4-NP
0650-0991

MF-NON PAINTED ROUGH
PLATE FOR LY4 /CLY4



ROUGH6-NP
0454-6509

MF-NON PAINTED ROUGH
PLATES FOR LY6/CLY6



CLY-CCTA-EXT-20
0542-2791
20FT EXTENSION
CORD FOR CLY-5CS



CUSTOM GOOF RINGS
Contact Factory with inner
and outer dimensions for
more information.



*Contact the factory for more information.

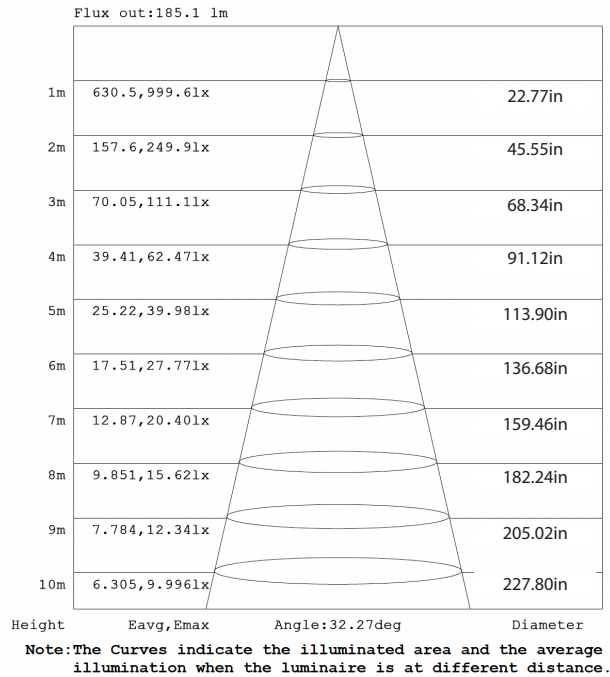
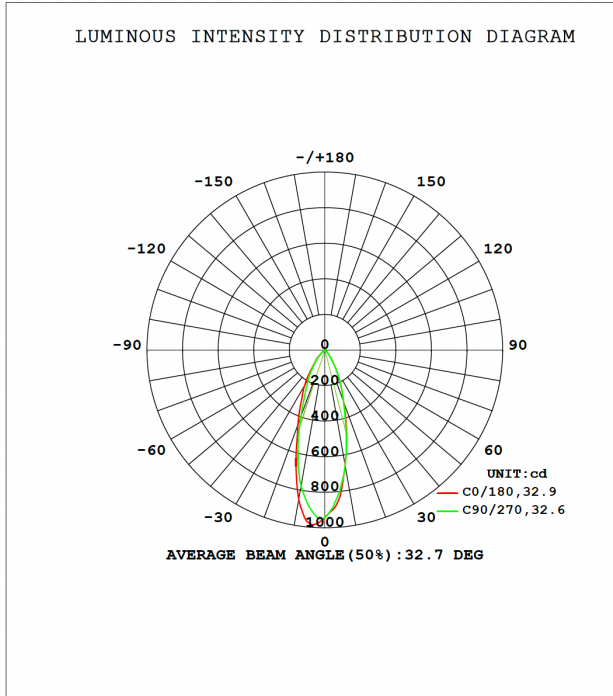
APPLICATION AND PERFORMANCE SPECIFICATION IS SUBJECT TO CHANGE WITHOUT NOTIFICATION



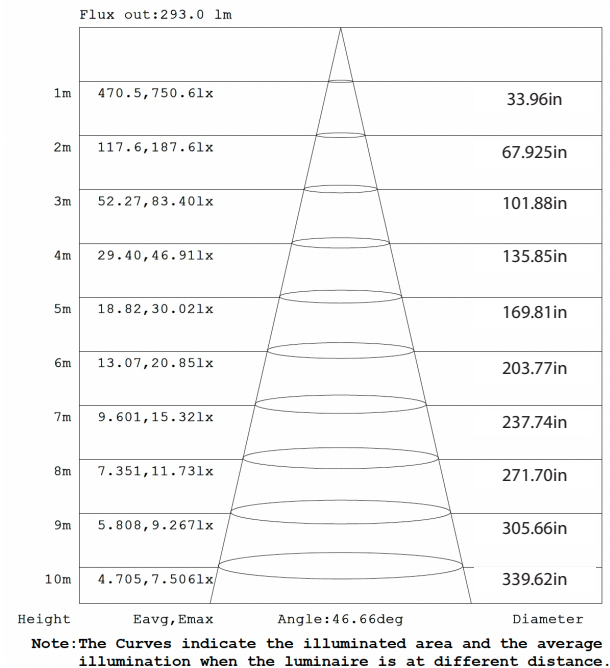
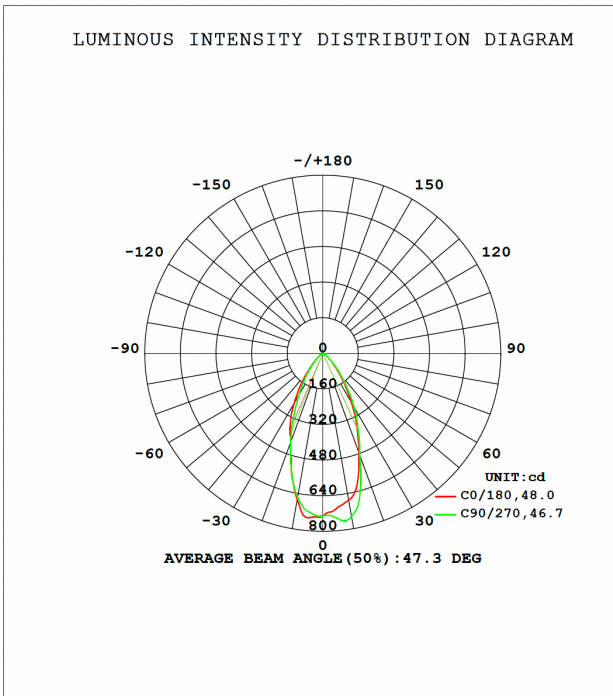
CONTRACTOR:	
PROJECT:	DATE:
PREPARED BY:	MODEL#:

PHOTOMETRICS

CLY3G @3000K



CLY4G @3000K



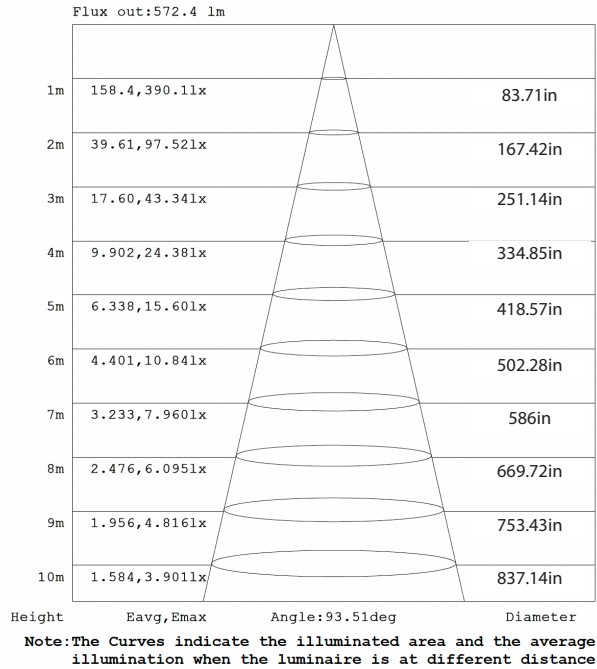
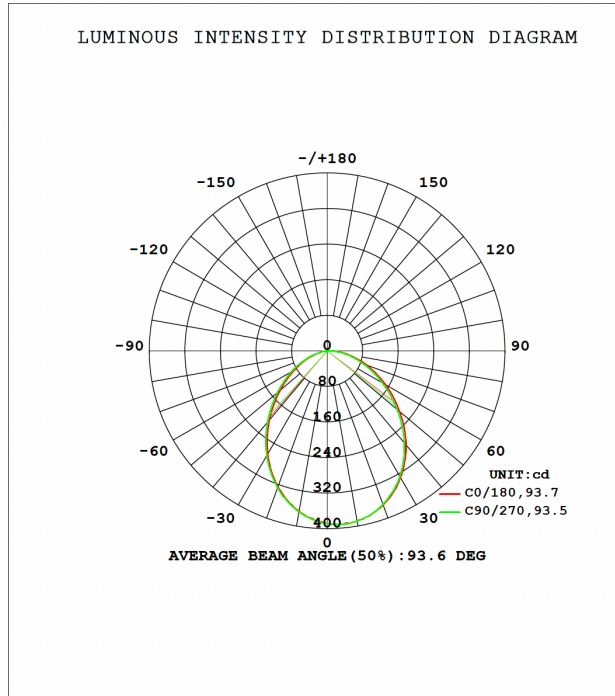
APPLICATION AND PERFORMANCE SPECIFICATION IS SUBJECT TO CHANGE WITHOUT NOTIFICATION



CONTRACTOR:	
PROJECT:	DATE:
PREPARED BY:	MODEL#:

PHOTOMETRICS

CLY6G @3000K



COMPATIBLE DIMMER LIST

NO	BRAND	DIMMER ITEM NO
1	LUTRON	MACL-153M-WH
2		DVCL-153P-WH
3		NLV-600
4		NTLV-600
5		N-600
6		NTELV-600
7		SCL-153P-WH
8		STCL-153M-WH
9		CTCL-153P
14	LEVITON	IPL06-10Z

APPLICATION AND PERFORMANCE SPECIFICATION IS SUBJECT TO CHANGE WITHOUT NOTIFICATION